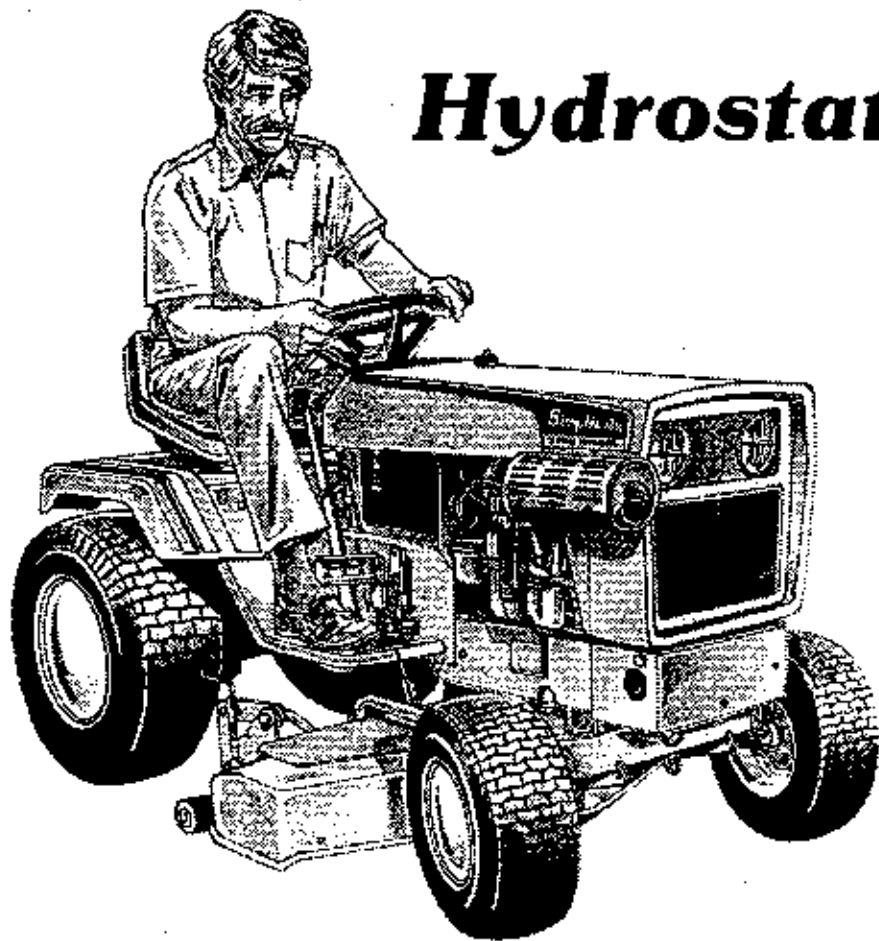


**Parts
Manual
7790
Hydrostatic Diesel
Series**



18.5 HP TRACTOR
MFG. NO. 1690890

TP-1087
PRINTED IN U.S.A.
984

Simplicity®

Product Identification:

When ordering parts, keep your products serial number and manufacturer's number in mind. Variations may occur in a part between early and later model products, causing the product serial number to be listed in the parts description whenever these variations occur.

Record your I.D. numbers here for quick, future reference.

Product Mfg. No. _____ S/N _____ Mower Mfg. No. _____ S/N _____

Attention:

Standard torques appear in a chart at the end of the manual, while important individual torques are given on specific parts drawings.

CRITICAL and MAJOR notations point out important facts or instructions which relate to personal safety and proper machine operation. Any CRITICAL notation **C** which may appear in this book, pinpoints characteristics which, if not properly followed, can create a safety hazard. Any MAJOR notation **M** which may appear in this book, marks characteristics which, if not properly followed, may result in operating failure, shortened product life, or greatly reduced quality of the unit. For your convenience, assembly notes are included in parts drawings to assist in repair and assembly of unit.

OILS - SPECIFICALLY BLENDED OF HIGH QUALITY BASE OILS & ADDITIVES.

Special Worm Gear Oils: Required for protection of brass gears and mating parts.

- **Warm Weather Worm Gear Oil** for use in tillers w/worm drive. **Quart, Part #118065; Case of 12 Quarts, Part #1685100.**
- **Cold Weather Worm Gear Oil** for snowthrowers with worm gear drive. **8 Oz. Bottle, Part #1704636, Case of 12 8 Oz. Bottles, Part #1685408.**

Multi-Purpose Hydraulic/Transmission Oil for use in most hydraulic applications, and hydrostatic and gear transmissions. Specific Simplicity applications: All hydrostatic transmissions, all bevel gear cases, all Broadmoor, Landlord, Sovereign, 4000, 6000, 6100, 6200, & 7000 Series transmissions (except Peerless Gear Transmissions). (Not used in SunStar tractor transmission.) **Case of 12 Quarts, Part #1685516, 2½ Gallon Container, Part #1685539.**

SAE 5W 30 SF/CD Cold Weather Engine Oil for use in all four cycle and diesel engines at 30° temp. and under. **Case of 12 Quarts, Part #1685576.**

SAE 15W40 SF/CD Engine Oil for gas and diesel engines, warm weather; see engine manufacturer recommendations. **Case of 12 Quarts, Part #1685554.**

GREASE GUN KIT has 12" flexible hose to get into tight spots with ease. Kit contains: gun and 1-8 Oz. tube of grease. **Part #1685510.** For replacement tube, order **Part #103077.**

PNEUMATIC TIRE SEAL seals all leaks including bead leaks and punctures up to 3/16 inch diameters. Prevents flats for tread life of tire. Available in following amounts.

Case of 12 - 11 Oz. Tubes **1685537**
Case of 24 - 11 Oz. Tubes **1685525**
5 Gallon Pail **1685527**

DESIGNER SEAT COVERS are double stitched, easy care vinyl. Keeps new seats new, makes worn seats look new.

Small Seat Cover w/Pocket, Part #1685540. Fits all Rear Engine Riders, Broadmoor, 3000, 4000, 5000, 5100, SunRunner & FC Series Tractors.

TOUCH-UP PAINT keeps equipment in showroom condition.

Spray Cans	Quarts	Daubers-12 Per Ctn.
<i>For Products Built After 8/1/89.</i>		
"Deep Orange" 13 Oz. Can 1685611 Case 12 Cans 1685614	1685612	1685616 Mixed 6 Deep Or., 6 White ½ Oz. Bottles
"Textured Black" 13 Oz. Can 1685610 Case 12 Cans 1685618	1685617	N/A
<i>For Products Built 7/1/88 thru 8/1/89.</i>		
"Powder Orange" 13 Oz. Can 1685589 Case 12 Cans 1685590	1685591	1685593 Mixed 6 Powder Or., 6 White ½ Oz. Bottles
"Black" 13 Oz. Can 1685551 Case 12 Cans 1685552	N/A	N/A
<i>For Products Built 12/1/85 thru 7/1/88.</i>		
"Classic Orange" 13 Oz. Can 1685558 Case 12 Cans 1685559	1685560	1685562 Mixed 6 Classic Or., 6 White ½ Oz. Bottles
"Black" 13 Oz. Can 1685551 Case 12 Cans 1685552	N/A	N/A
<i>For 1977 thru Early Model Year 1985 Products</i>		
"Simplicity Orange" 13 Oz. Can 103262 Case 12 Cans 1685178	1685037	1685520 Mixed 6 Simpl. Or., 6 White ½ Oz. Bottles
<i>All Models</i>		
"White" 13 Oz. Can 103049 Case 12 Cans 1685178	1685032	See Above

Consult decal on equipment for proper orange color.

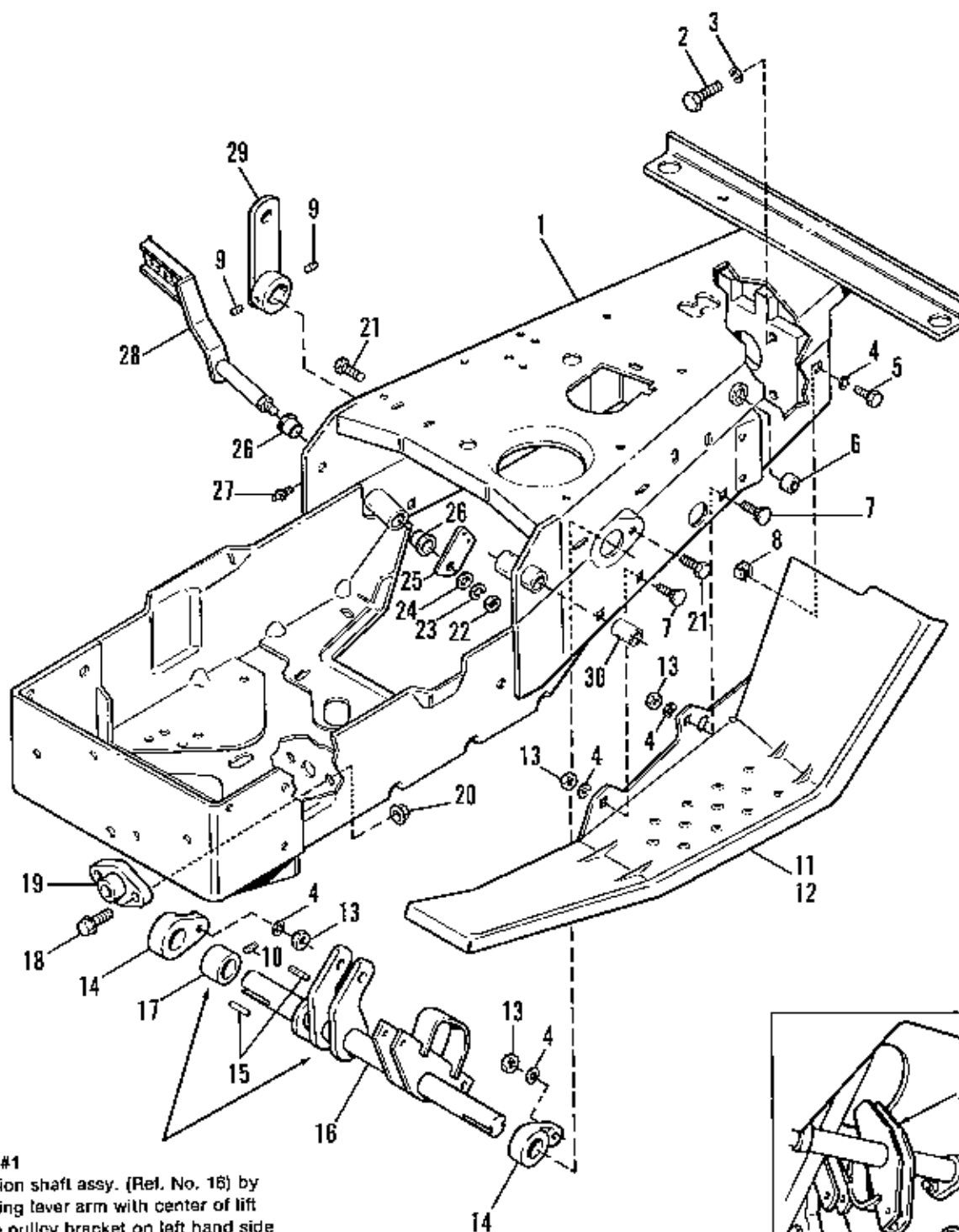
Large Seat Cover w/Pocket, Part #1685541. Fits all Landlord, Sovereign, Baron, 5200, LTH, 6000, 6500, GTH, 7000 & 9000 Series Tractors.

SunStar Seat Cover, Part #1685577. Fits all SunStar Tractors.

Extend Equipment Life - Use Only Genuine Simplicity Parts

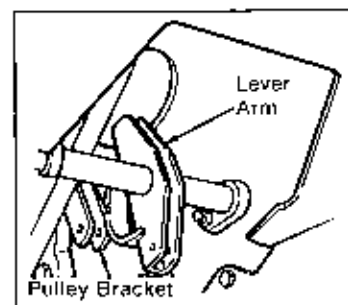
Table of Contents

FRAME & FOOTREST GROUP	2
FRONT AXLE GROUP	4
STEERING GROUP	6
ENGINE, EXHAUST & DRIVE SHAFT GROUP	8
CLUTCH & BRAKE GROUP	12
CLUTCH & BRAKE CONTROL GROUP	14
HYDROSTATIC PUMP	16
HYDROSTATIC PUMP	18
HYDROSTATIC CONTROL GROUP	22
TRANSMISSION GROUP	24
PTO CONTROL GROUP	26
PTO CONE CLUTCH GROUP	28
HYDRAULIC LIFT GROUP	30
CONTROL VALVE GROUP	32
BEVEL GEAR & SIDE PLATE GROUP	34
DRAW BAR GROUP	36
REAR AXLE & DIFFERENTIAL GROUP	38
ELECTRICAL GROUP	40
DASH GROUP	42
HOOD & GRILLE GROUP	44
SEAT & DECK GROUP	46
DECAL GROUP	48
WHEEL & TIRE GROUP	50



Step #1
Position shaft assy. (Ref. No. 16) by aligning lever arm with center of lift cable pulley bracket on left hand side of frame. (See reference drawing.)

Step #2
Secure shaft assembly in place w/set collar (Ref. No. 17) and setscrew (Ref. No. 10). Then install lift lever assy. (Ref. No. 29) on shaft assy. (Ref. No. 16) with no end play side to side.

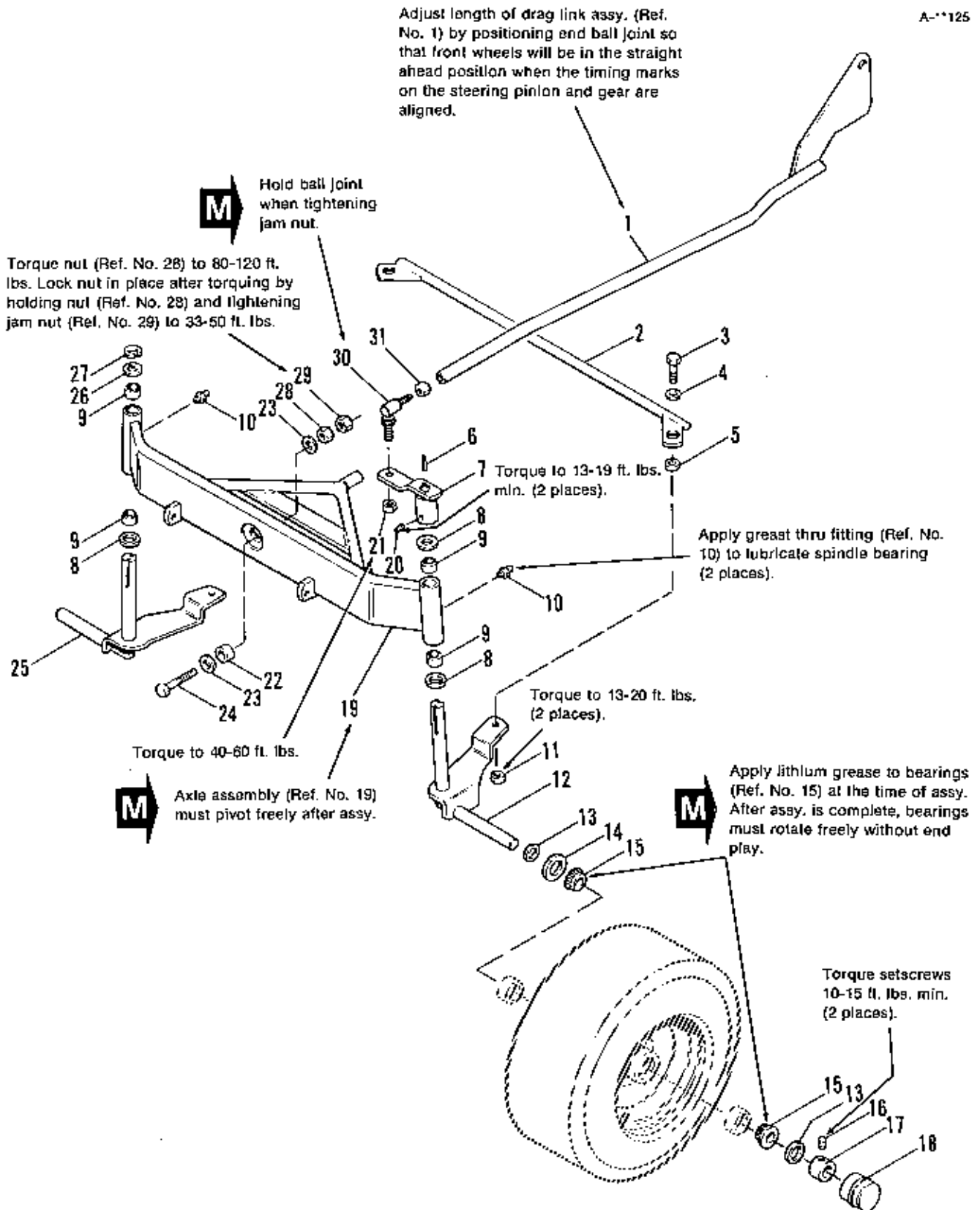


NOTE: Use standard hardware torque spec. chart unless otherwise noted.

Ref.Part No.	No.	Qty.	Description
*1	1673508	1	FRAME ASSY., w/ Bushings
2	921212	4	CAPSCREW, Hex Hd., 7/16-14 x 1-1/2
3	918199	4	LOCKWASHER, 7/16
4	917356	8	LOCKWASHER 5/16
5	921332	2	CAPSCREW, Hex Hd., 5/16-18 x 3/4
6	174662	1	BUSHING
7	920562	4	BOLT, Carriage, 5/16-18 x 3/4
8	920470	2	NUT, Speed, 5/16-18
9	928734	2	SETSCREW, 5/16-18 x 14
10	928709	1	SETSCREW, 5/16-18 x 3/8
11	1665908	1	FOOTREST, LH
12	1665909	1	FOOTREST, RH.
13	917372	6	NUT, Hex, Full, 5/16-18
14	170975	2	BEARING, Lift Lever
15	157652	2	KEY
16	1667271	1	SHAFT ASSY., Lift
17	157624	1	COLLAR, Set
18	928727	2	SCREW, Hex, Whiz, Flange, 3/8-16 x 1-1/4
19	1653876	1	BEARING, Pivot
20	928352	2	LOCKNUT, Hex, Flange, 3/8-16
21	921977	2	CAPSCREW, Hex Hd., 5/16-18 x 1-3/4
22	916950	1	NUT, Hex, Full, 3/8-16
23	916985	1	LOCKWASHER, 3/8
24	917378	1	WASHER, Plain, 3/8
25	157300	1	ARM, Foot Pedal
26	108419	2	BUSHING
27	921133	1	FITTING, Grease
28	1674137	1	PEDAL ASSY., Foot
29	157625	1	LEVER ASSY., RH
30	158544	1	BEARING, Interim Pinion

* Ref. No. 1 includes Ref. Nos. 6, 27 and 30.

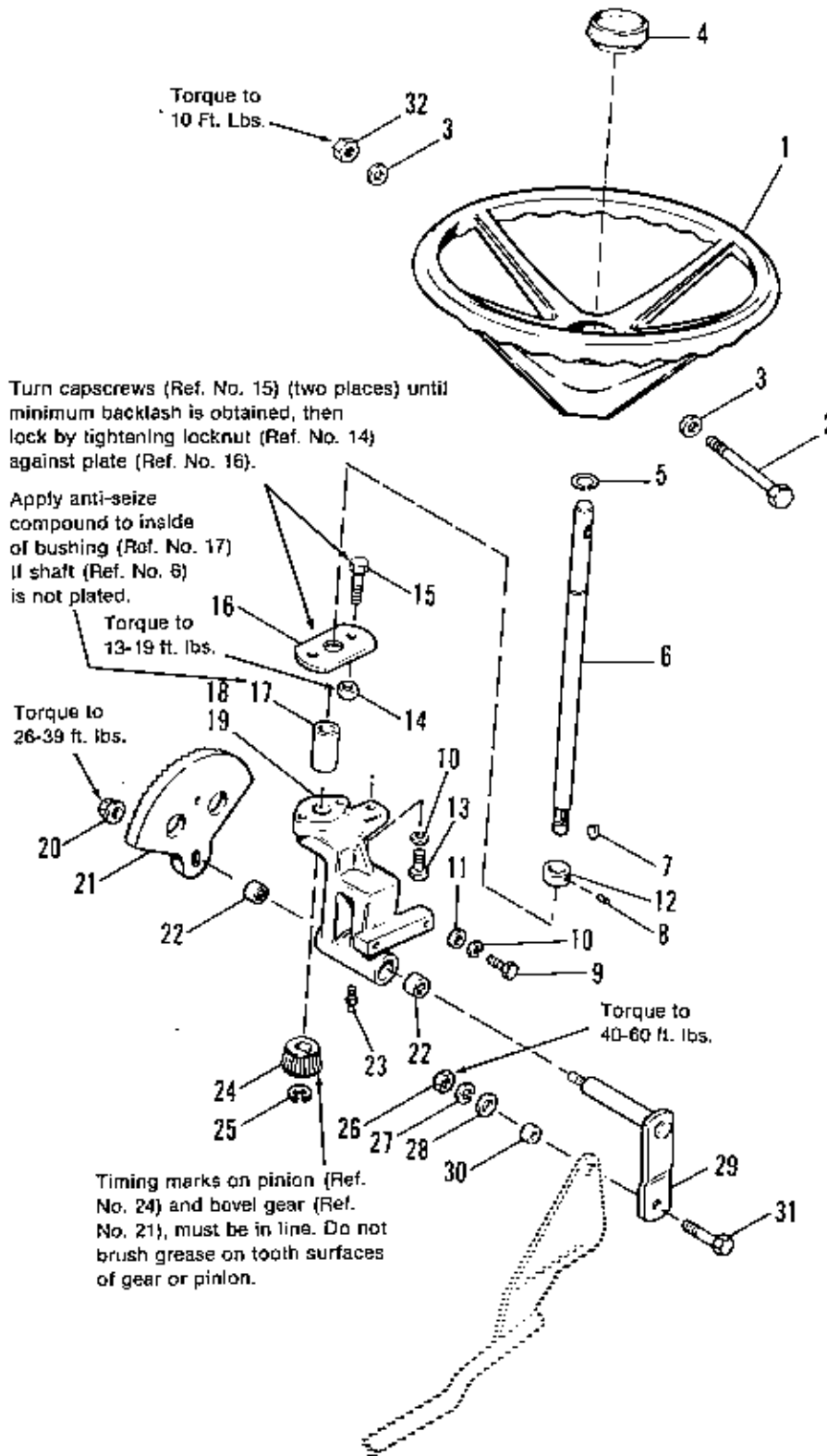
A-1125



NOTE: Use standard hardware torque spec. chart unless otherwise noted.

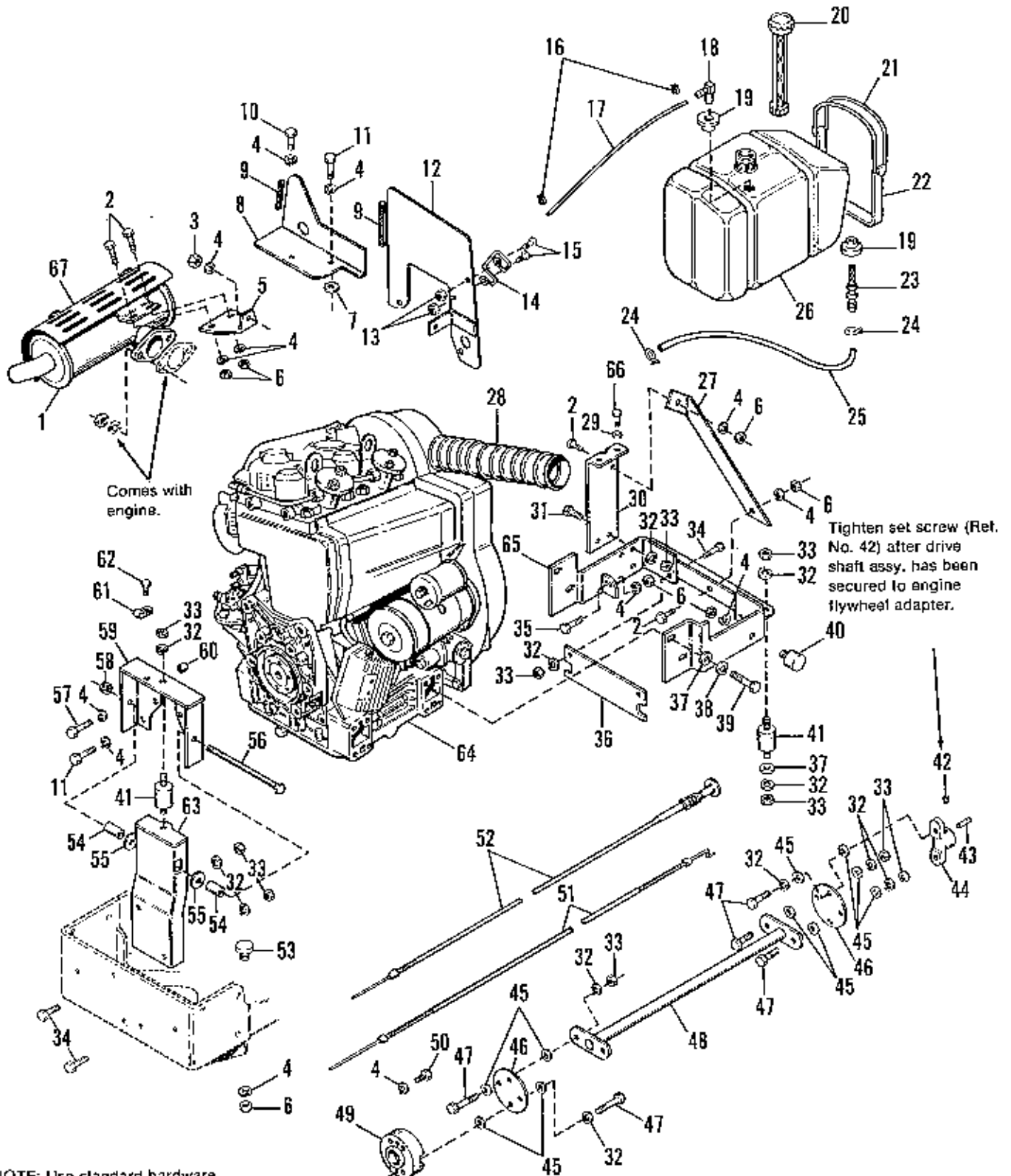
Ref. No.	Part No.	Qty.	Description
1	1666648	1	LINK ASSY., Drag
2	157499	1	ROD ASSY., Tie
3	921210	2	CAPSCREW, Hex Hd., 3/8-16 x 1
4	917378	2	WASHER, Plain, 3/8
5	154177	2	SPACER
6	157427	2	KEY, Square
7	170998	1	ARM ASSY., Steering
8	108181	3	WASHER
9	154289	4	BUSHING
10	921133	2	FITTING, Grease
11	930651	2	LOCKNUT, Hex, 3/8-16
12	171774	1	SPINDLE ASSY., LH
13	171375	4	SPACER
14	170168	2	SEAL
15	154486	4	CONE, Bearing
16	928691	2	SETSCREW, 5/16-18 x 5/16
17	8021010	2	COLLAR, Set
18	154487	2	CAP, Hub
19	1850553	1	AXLE ASSY., Front
20	928721	2	SETSCREW, 5/16-18 x 1/2
21	930245	1	LOCKNUT, Hex, 1/2-20
22	157618	1	SPACER
23	918431	2	WASHER, Plain, 1/2
24	927469	1	CAPSCREW, Hex Hd., 1/2-13 x 2-1/4
25	157494	1	SPINDLE ASSY., RH
26	8061012	1	WASHER
27	927794	1	RING, Retaining
28	930648	1	LOCKNUT, Hex, 1/2-13
29	913744	1	LOCKNUT, Hex, Jam, 1/2-13
30	164272	1	BALL, Joint
31	919262	1	LOCKNUT, Hex, Jam, 1/2-20

NOTE: See page 50 for Wheel & Tire parts list.



NOTE: Use standard hardware torque spec. chart unless otherwise noted.

Ref. No.	Part No.	Qty	Description
1	1670989	1	WHEEL, Steering
2	925690	1	BOLT, Hex, 5/16 x 3-1/2
3	919326	2	WASHER, 5/16
4	1657017	1	CAP, Steering Wheel
5	154264	1	RING, Retaining
6	1673008	1	SHAFT, Steering
7	910224	1	KEY, Woodruff, #6
8	928734	1	SETSCREW, 5/16-18 x 1/4
9	921966	2	CAPSCREW, Hex Hd., 3/8-16 x 7/8
10	916965	3	LOCKWASHER, 3/8
11	917378	2	WASHER, Plain, 3/8
12	8021010	1	COLLAR, Set
13	921965	1	CAPSCREW, Hex Hd., 3/8-16 x 3/4
14	928731	2	LOCKNUT, Hex, Jam, 3/8-16
15	920415	2	CAPSCREW, Hex Hd., 3/8-16 x 1-1/4
16	171000	1	PLATE, Steering
17	170992	1	BUSHING
18	1668625	1	HOUSING ASSY., Steering (Incl. Ref. Nos. 17 & 22)
19	170960	1	HOUSING ASSY., Steering
20	930650	1	LOCKNUT, Hex, Flange, 7/16-14
21	170987	1	GEAR, Bevel
22	154258	2	BEARING, Needle
23	914687	1	FITTING, Grease
24	170986	1	PINION, Bevel
25	927793	1	E-RING
26	916951	1	NUT, Hex, Full, 1/2-13
27	916966	1	LOCKWASHER, 1/2
28	918431	1	WASHER, Plain, 1/2
29	1666204	1	ARM ASSY., Steering
30	105051	1	SPACER
31	920328	1	CAPSCREW, Hex Hd., 1/2-13 x 1-1/2
32	923362	1	LOCKNUT, Hex, Cntr. 5/16-18

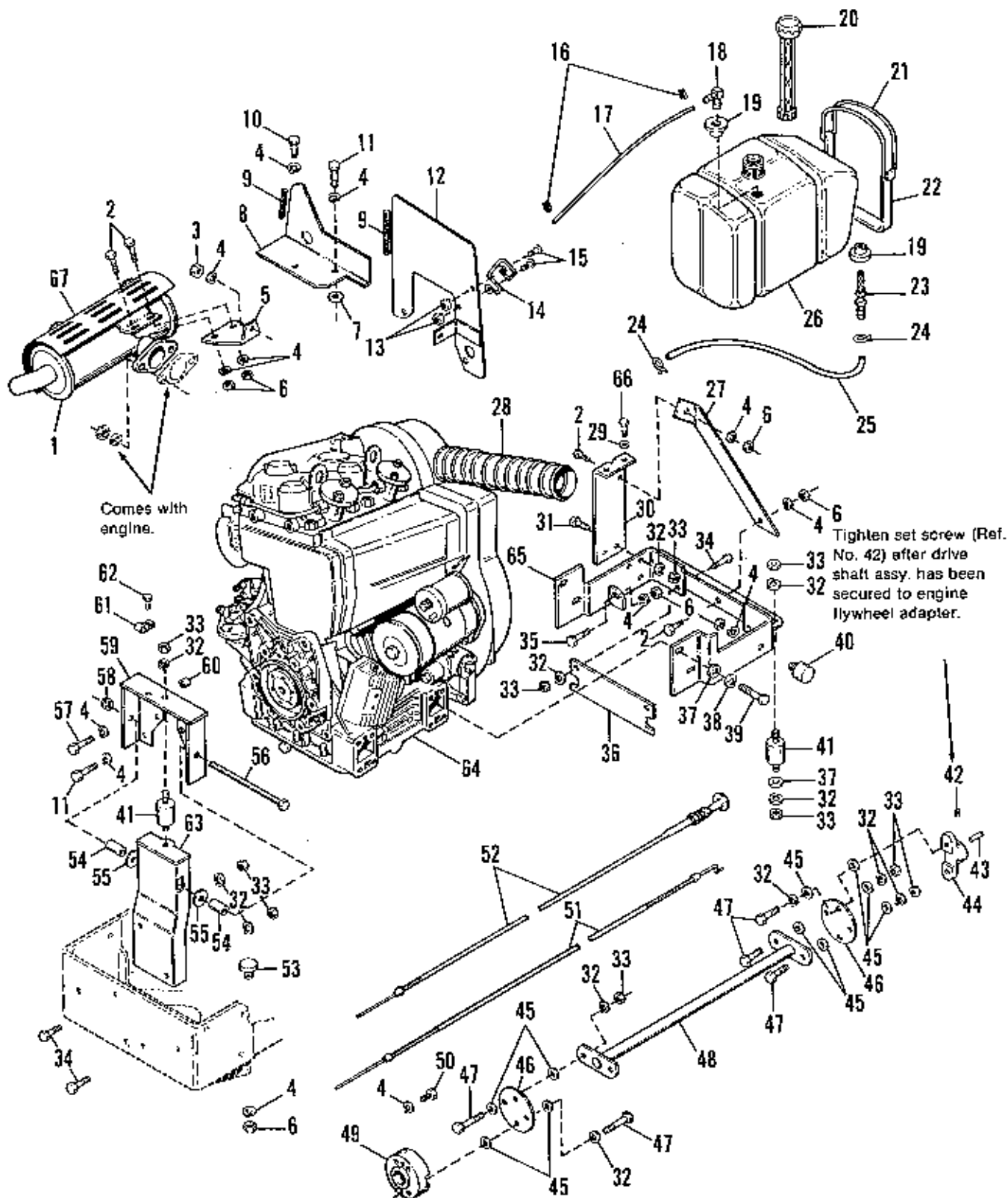


NOTE: Use standard hardware torque spec. chart unless otherwise noted.

Ref. No.	Part No.	Qty.	Description
1	1673810	1	MUFFLER (Incl. Ref. No. 67)
2	921332	4	CAPSCREW, Hex Hd., 5/16-18 x 3/4
3	950210	1	NUT, Hex, M8 x 1.25
4	917356	21	LOCKWASHER, 5/16
5	1673812	1	BRACKET, Muffler
6	917372	8	NUT, Hex, 5/16-18
7	174870	1	SPACER
8	1673509	1	DEFLECTOR
9	1673904	2	MOLDING
10	950017	1	CAPSCREW, M8 - 1.25 x 16
11	950018	5	CAPSCREW, Hex Hd., M8 x 1.25 x 20 Pltd.
12	1673794	1	DEFLECTOR ASSY.
13	928919	2	NUT & WASHER ASSY. #10-32
14	1673966	1	RETAINER, Air Cleaner Tube
15	930531	2	SCREW - Truss Hd., #10-32 x 1/2
16	*1674021	2	CLAMP
17	*1673965	1	LINE, Drip
18	*1673524	1	FITTING
19	*1654930	2	BUSHING
20	171252	1	CAP, Fuel Tank
21	172744	2	STRAP, Fuel Tank
22	171330	2	STRAP, Tank
23	*1654460	1	FITTING
24	*154372	2	CLAMP
25	*1673529	1	HOSE
26	*1673522	1	TANK, Fuel
27	1673649	1	SUPPORT, Fuel Filter Bracket
28	1674002	1	HOSE, Intake, 2.0 ID
29	918199	2	LOCKWASHER, 7/16
30	1674003	1	BRACKET, Filter Fuel Assy.
31	921965	2	CAPSCREW, Hex Hd., 3/8-16 x 3/4
32	918965	22	LOCKWASHER, 3/8
33	916950	18	NUT - Hex Full, 3/8-16
34	921966	4	CAPSCREW, Hex Hd., 3/8-16 x 7/8
35	921221	2	CAPSCREW, Hex Hd., 5/16-18 x 1-1/2

See page 11 for Ref. No. 36-67.

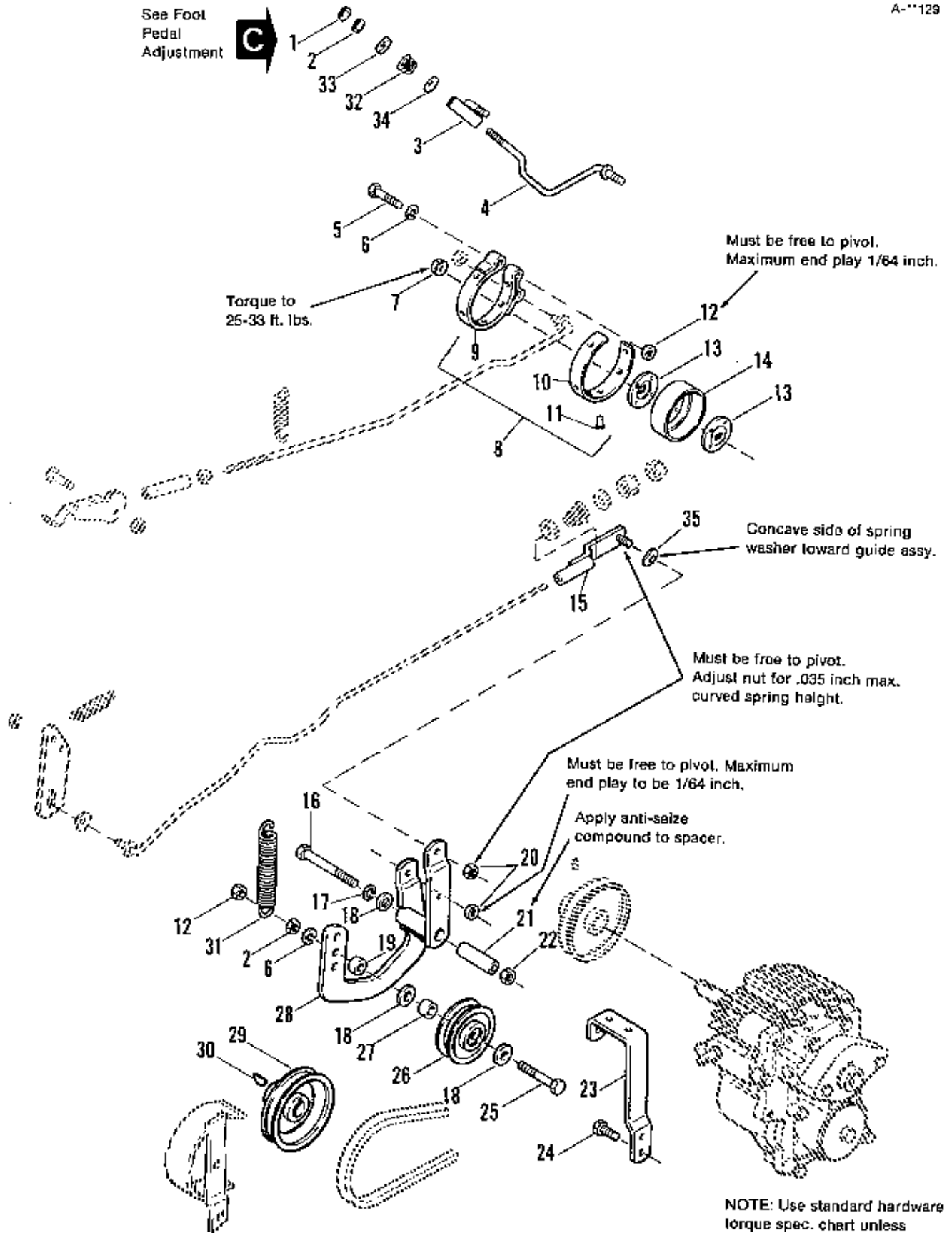
*Order part number 1673520 to receive Ref. No. 16 qty. 1, 17, 18, 19 qty. 2, 23, 24 qty. 1, 25 & 26.



NOTE: Use standard hardware torque spec. chart unless otherwise noted.

Ref. No.	Part No.	Qty.	Description
36	1673315	1	BAR, Safety
37	917378	6	WASHER, 3/8
38	950220	4	LOCKWASHER, M10
39	950036	4	CAPSCREW, M10 x 1.50 x 25 Pltd.
40	1673317	2	BUMPER, Engine Mount
41	1673316	3	ISOLATOR, Engine Mount
42	924624	1	SETSCREW, 3/8-24 x 3/8
43	157427	1	KEY, Drive Shaft
44	172264	1	FLANGE, Drive Shaft
45	157424	16	WASHER, Special
46	173026	2	COUPLING
47	920415	8	CAPSCREW, Hex Hd., 3/8-16 x 1-1/4
48	1674191	1	DRIVE SHAFT ASSY.
49	1674189	1	ADAPTER
50	951169	4	CAPSCREW, Hex. Socket Hd. M8 x 1.25 x 30
51	1673526	1	CONTROL, Throttle
52	1673525	1	CONTROL, Fuel Shut-off
53	1673780	2	BUMPER
54	1673736	2	SPACER
55	922611	2	WASHER, 13/32 x 1-1/4
56	933364	1	CAPSCREW, Hex Hd., 3/8-16 x 7
57	950021	2	CAPSCREW, Hex Hd., M8 x 1.25 x 40 pltd.
58	930651	1	LOCKNUT, Centerlock 3/8-16
59	1673735	1	ENGINE MOUNT ASSY., Front
60	1673796	2	SPACER
61	933979	1	CLAMP
62	925003	1	SCREW, Tapite 1/4-20 x 1/2
63	1673731	1	ENGINE MOUNT ASSY., Front
64		1	ENGINE, Lombardini Diesel
65	1673311	1	ENGINE MOUNT ASSY., Rear
66	920676	3	CAPSCREW, 7/16-14 x 1
67	1678564	1	SHIELD, Muffler, Chrome

Ref. Nos. 1-35 found on page 9.

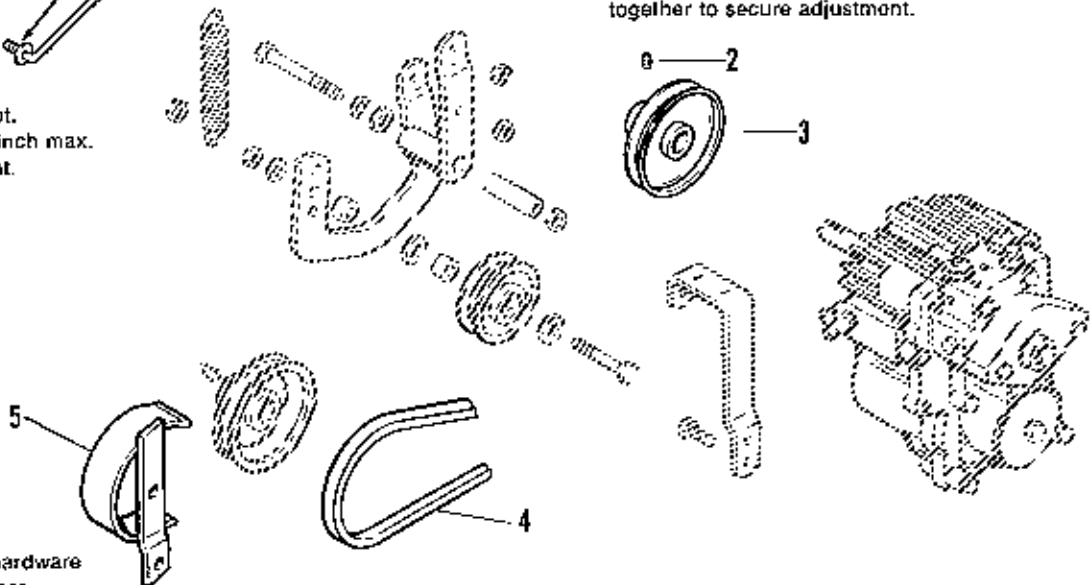
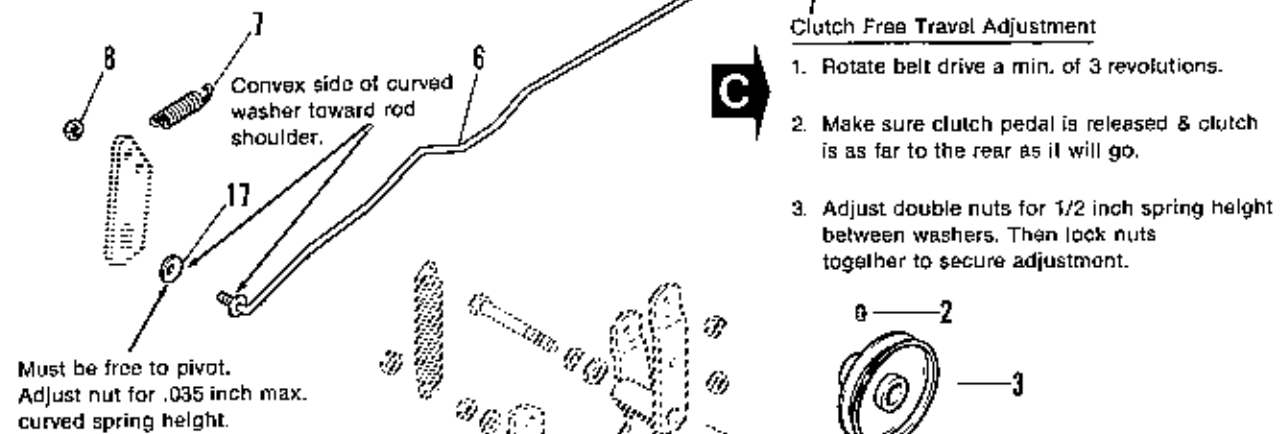
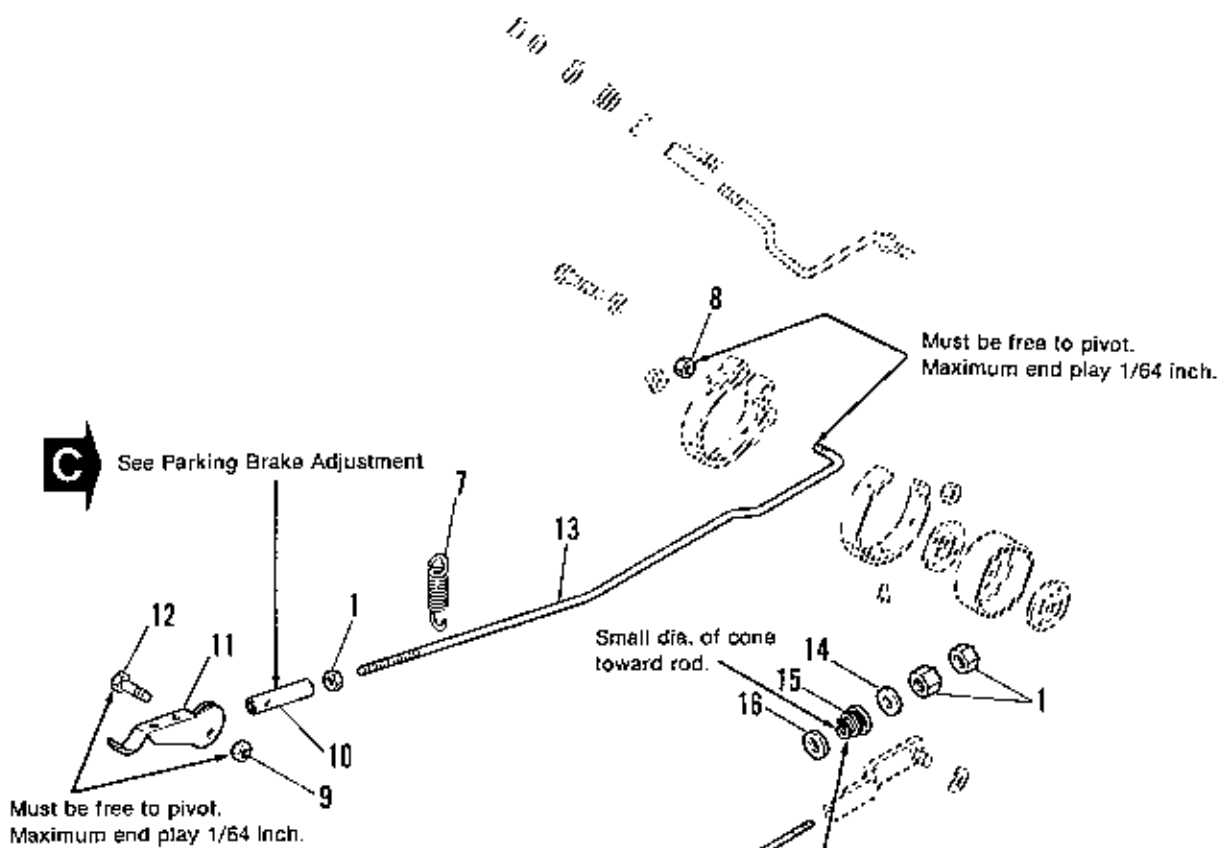


Ref. No.	Part No.	Qty.	Description
1	919439	1	LOCKNUT, Hex, Esna, 3/8-16
2	916950	2	NUT, Hex, Full 3/8-16
3	166119	1	GUIDE ASSY., Rod
4	1650651	1	ROD, Brake
5	921971	1	CAPSCREW, Hex Hd., 3/8-16 x 1-3/4
6	916965	2	LOCKWASHER, 3/8
7	930650	1	LOCKNUT, Hex, Flange, 7/16-14
8	172234	1	BAND ASSY., Brake
9		1	BAND, Brake (See Ref. No. 8)
10	172237	1	LINING, Brake
11	926021	5	RIVET, 3/16 x 1/4
12	930651	2	LOCKNUT, Hex, 3/8-16
13	158196	2	WASHER, Special
14	168176	1	DRUM, Brake
15	166157	1	GUIDE ASSY., Rod
16	926295	1	CAPSCREW, Hex Hd., 7/16-14 x 3-3/4
17	918199	1	LOCKWASHER, 7/16
18	917378	3	WASHER, Plain, 3/8
19	157081	1	SPACER
20	923362	2	LOCKNUT, Hex, 5/16-18
21	166130	1	SPACER
22	916213	1	NUT, Hex, Full, 7/16-14
23	166156	1	BRACKET
24	926035	2	SCREW, Self Tapping, 3/8 x 3/4
25	921972	1	CAPSCREW, Hex Hd., 3/8-16 x 2-1/2
26	1665432	1	PULLEY ASSY.
27	1666294	1	SPACER
28	166126	1	LEVER ASSY., Idler
29	1657323	1	PULLEY
30	905123	1	KEY
31	154369	1	SPRING
32	157127	1	SPRING, Cone
33	922611	1	WASHER
34	917642	1	WASHER
35	1668737	1	WASHER, Curved, Spring

**FOOT PEDAL BRAKE ADJUSTMENT:**

After parking & clutch free travel adjustment have been completed, adjust foot pedal brake as follows:

1. Lock parking brake.
2. Adjust nut (item 2) for 1/2 inch spring height between washers.
3. Depress foot pedal, to engage brake. Transmission drive bell must be fully disengaged when brake is engaged.
4. Locknuts (Ref. Nos. 1 & 2) together to secure adjustment.



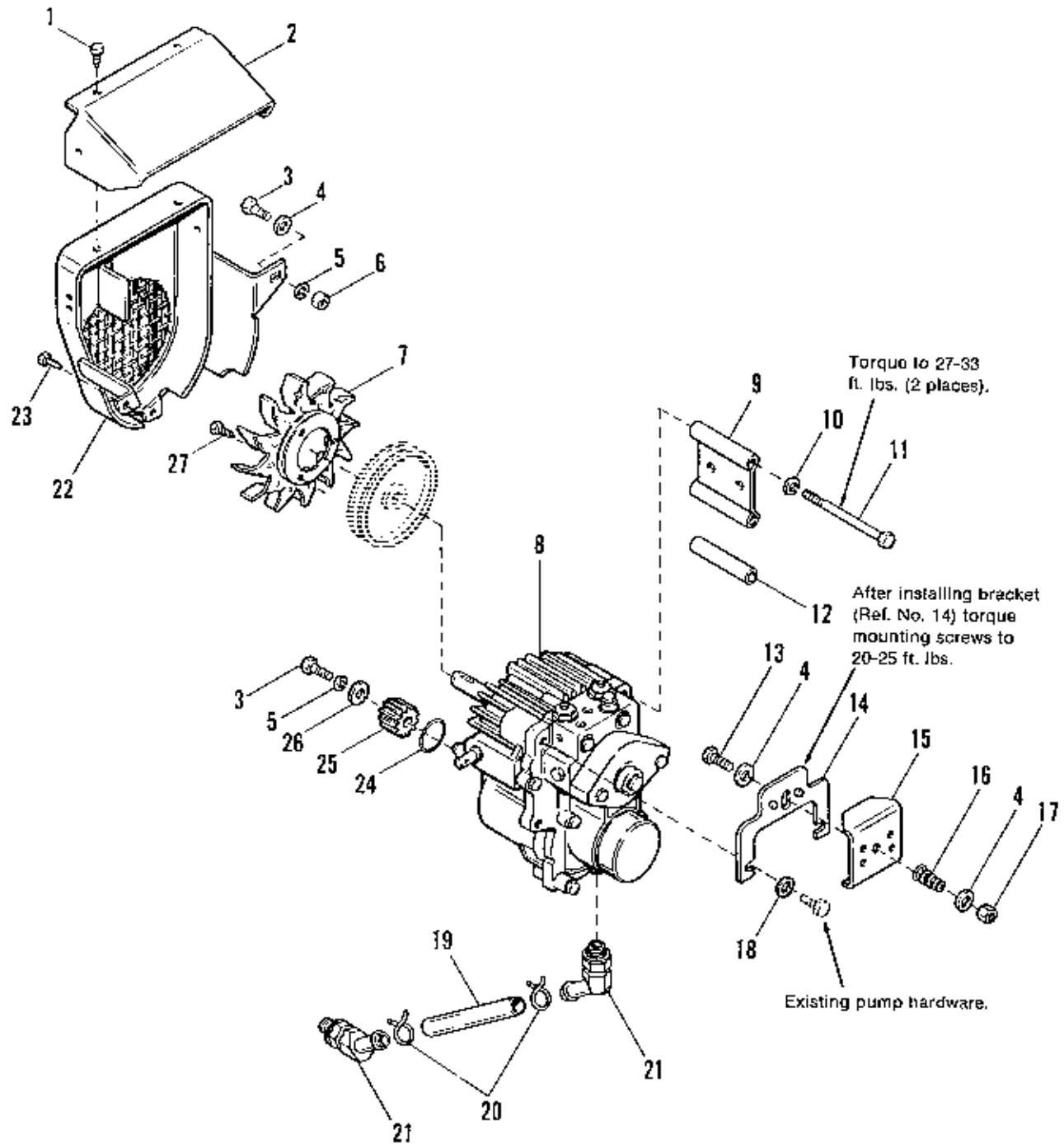
NOTE: Use standard hardware torque spec. chart unless otherwise noted.

Ref. No.	Part No.	Qty.	Description
1	917372	3	NUT, Hex, Full, 5/16-18
2	928709	1	SETSCREW, 5/16-18 x 3/8
3	166173	1	PULLEY, Drive
4	1650502	1	V-BELT, Drive
5	166122	1	GUARD ASSY.
6	1650531	1	ROD, Clutch
7	121037	2	SPRING
8	923362	2	LOCKNUT, Hex, 5/16-18
9	923358	1	LOCKNUT, Hex, 1/4-20
10	171994	1	END, Rod
11	172108	1	LEVER, Parking Brake
12	926771	1	CAPSCREW, Hex Hd., 1/4-20 x 1
13	1668419	1	ROD ASSY.
14	919381	1	WASHER, 5/16
15	157127	1	SPRING, Cone
16	917377	1	WASHER
17	1668737	1	WASHER, Curved, Spring



PARKING BRAKE ADJUSTMENT

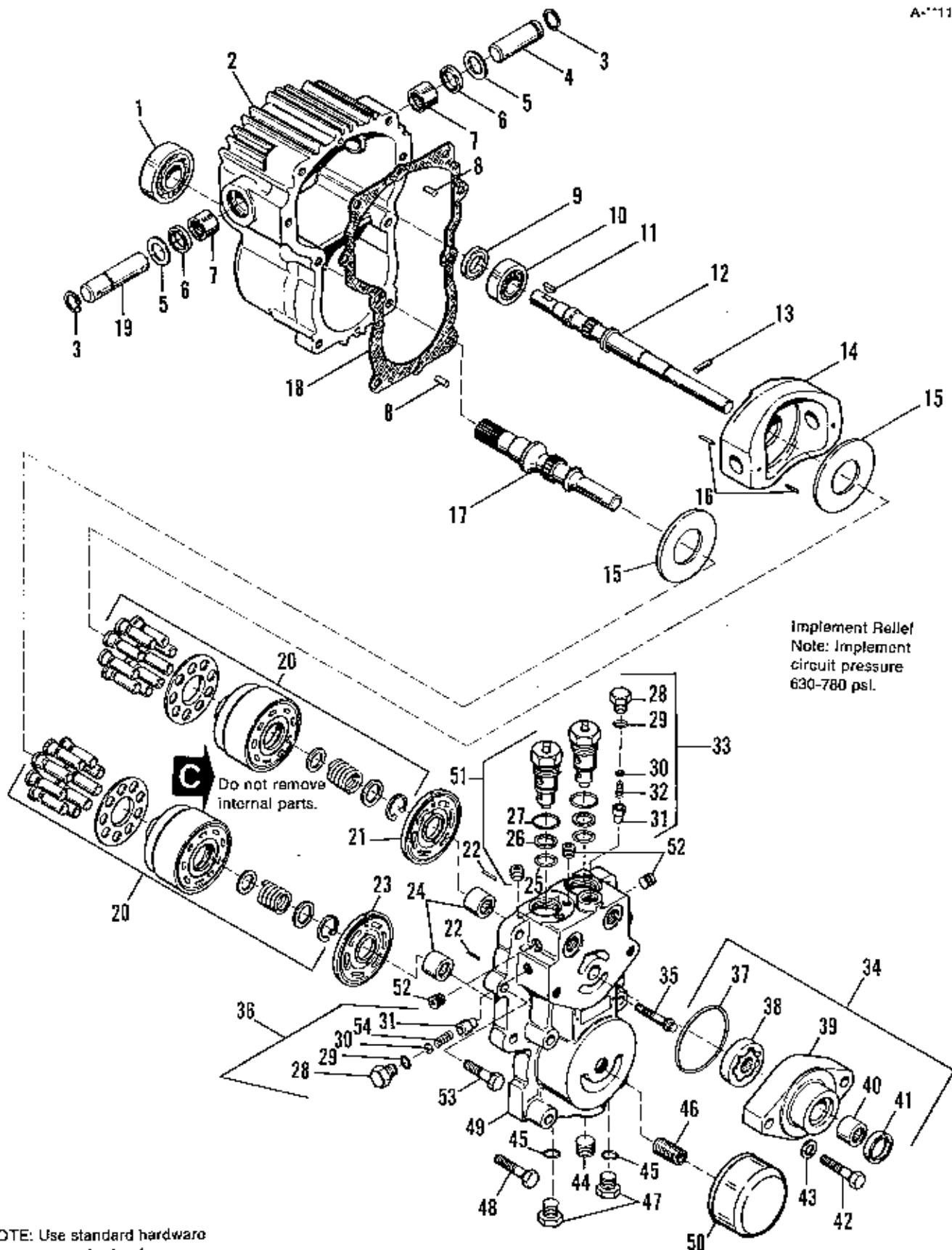
1. Loosen nut (Ref. No. 1).
2. Rotate parking brake lever (Ref. No. 11) to adjust parking brake. Turn lever one complete turn when making adjustments.
3. To lock parking brake, rotate lever up towards seat deck until lever is against upper area of footrest.
4. After adjustment, parking brake must hold the vehicle in any direction when parked on a 30% or 16.7° slope.
5. After parking brake is properly adjusted, secure adjustment tightening nut (Ref. No. 1).



NOTE: Use standard hardware torque spec. chart unless otherwise noted.

Ref. No.	Part No.	Qty.	Description
1	923735	4	SCREW, Self-Tapping, #10 x 3/8
2	178779	1	DEFLECTOR, Shroud
3	921332	2	CAPSCREW, Hex Hd., 5/16-18 x 3/4
4	917642	3	WASHER, Plain, 5/16
5	917356	2	LOCKWASHER, 5/16
6	917372	1	NUT, Hex, Full, 5/16-18
7	166022	1	FAN, Pulley
8	*1671582	1	HYDROSTATIC PUMP & MOTOR UNIT
9	1650633	1	SPACER
10	916965	3	LOCKWASHER, 3/8
11	925695	3	CAPSCREW, Hex Hd., 3/8-16 x 5
12	1650524	1	SPACER
13	921333	1	CAPSCREW, Hex Hd., 5/16-18 x 1
14	1651089	1	BRACKET
15	1651090	1	LATCH, Release
16	153010	1	SPRING
17	923362	1	LOCKNUT, Hex, 5/16-18
18	156065	2	WASHER
19	1671229	1	HOSE, Inlet
20	930709	2	CLAMP, Hose
21	1671228	2	ELBOW, Hose Fitting
22	1666415	1	SHROUD ASSY., w/Screen
23	925359	1	SCREW, Hex, Washer Hd., Taptite, 5/16-18 x 3/4
24	1651703	1	O-RING
25	166003	1	PINION, Motor Shaft
26	123144	1	WASHER
27	927428	3	SCREW, Hex, Washer Hd., Taptite, 1/4-20 x 3/8

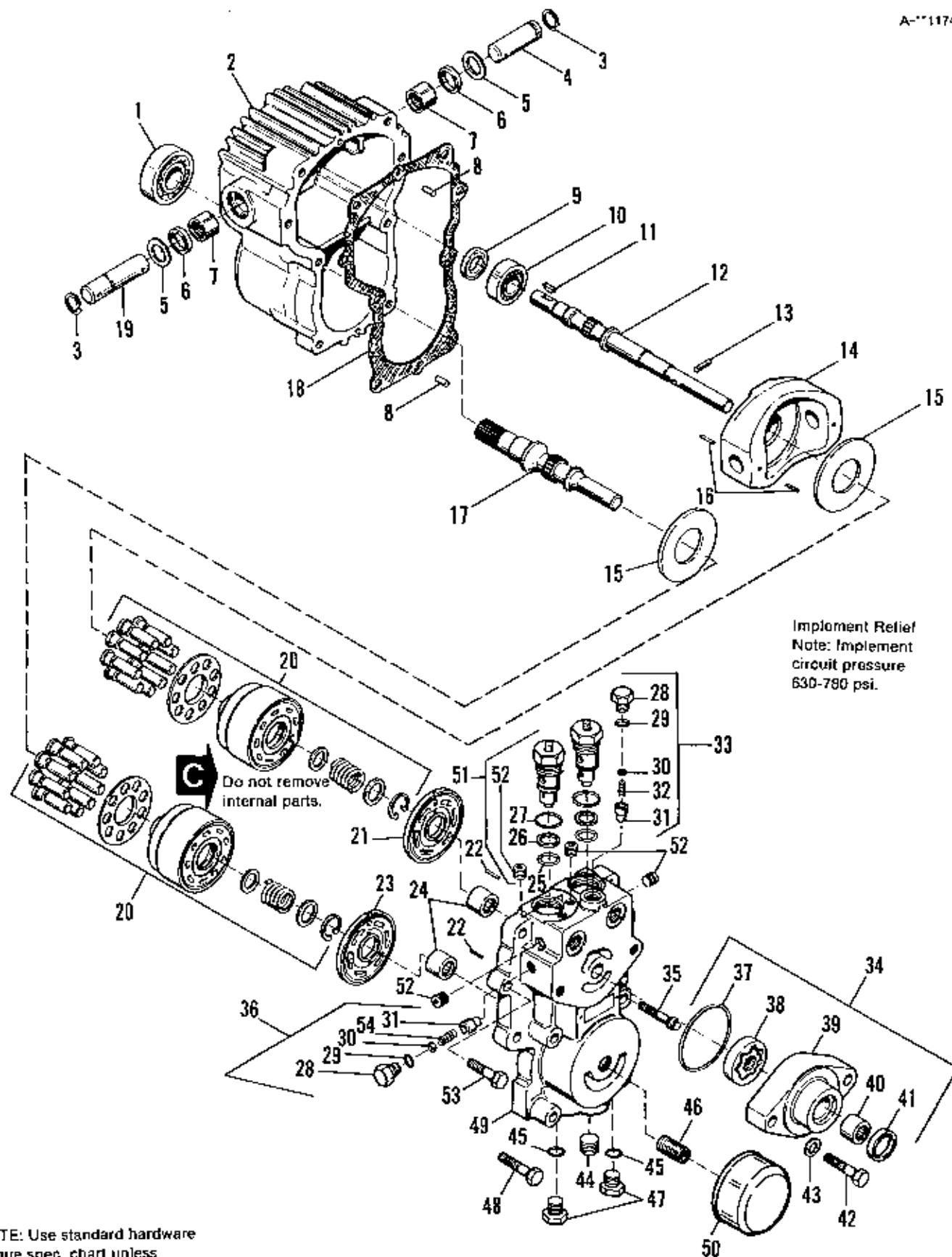
*See next page for parts breakdown.



NOTE: Use standard hardware torque spec. chart unless otherwise noted.

Ref. No.	Part No.	Qty.	Description
1	1652181	1	BEARING, Ball
2	1673534	1	HOUSING
3	1652192	2	RING, Retainer
4	1652194	1	TRUNNION
5	1652235	2	WASHER, Special
6	1652234	2	SEAL, Lip
7	1652251	2	BEARING, Needle
8	1652185	2	PIN, Headless, Straight
9	1652232	1	SEAL, Lip
10	1652231	1	BEARING, Ball
11	905123	1	KEY, Woodruff
12	1652229	1	SHAFT, Pump
13	1652228	1	PIN, Headless
14	1673533	1	PLATE, Swash
15	1673532	2	PLATE, Thrust
16	1652226	3	PIN, Spring, Coiled
17	1652186	1	SHAFT, Motor
18	1652184	1	GASKET
19	1652183	1	TRUNNION
20	1673535	2	CYLINDER BLOCK KIT
21	1652223	1	PLATE, Valve
22	1652224	2	PIN, Straight
23	1652189	1	PLATE, Valve
24	1652222	2	BEARING, Needle
25	1652221	2	O-RING
26	1652220	2	RING, Backup
27	1652219	2	O-RING
28	1652217	2	PLUG, Hex Hd.
29	921884	2	O-RING

See page 21 for Ref. No. 30 thru 54



NOTE: Use standard hardware torque spec. chart unless otherwise noted.

Ref. No.	Part No.	Qty.	Description
30	1652216	1**	SHIM
31	1652214	2	CONE, Relief Valve
32	1667773	1	SPRING, Relief Valve
33	1667774	1	RELIEF VALVE KIT
34	1685128	1	CHARGE PUMP KIT
35	1652212	2	CAPSCREW, 12 pt.
36	1673538	1	CHARGE RELIEF VALVE
37	1652207	1	O-RING
*38		1	GEROTER
*39		1	HOUSING, Charge Pump
40	1652204	1	BEARING, Needle
41	1652203	1	SEAL, Lip
42	925696	2	CAPSCREW, 7/16-14 x 2
43	1652201	2	WASHER, Flat
44	1671665	1	PLUG, Pipe
45	1652196	2	O-RING
46	1671699	1	UNION, Filter
47	1652197	2	PLUG, Hex Hd.
48	923701	4	CAPSCREW, 3/8-16 x 2
49	1652254	1	SECTION, Center
50	1671234	1	FILTER (Short Canister)
51	1673537	2	CHECK VALVE
52	1652213	4	PLUG, Pipe
53	920415	2	CAPSCREW, 3/8-16 x 1-1/4
54	1652253	1	SPRING, Relief Valve

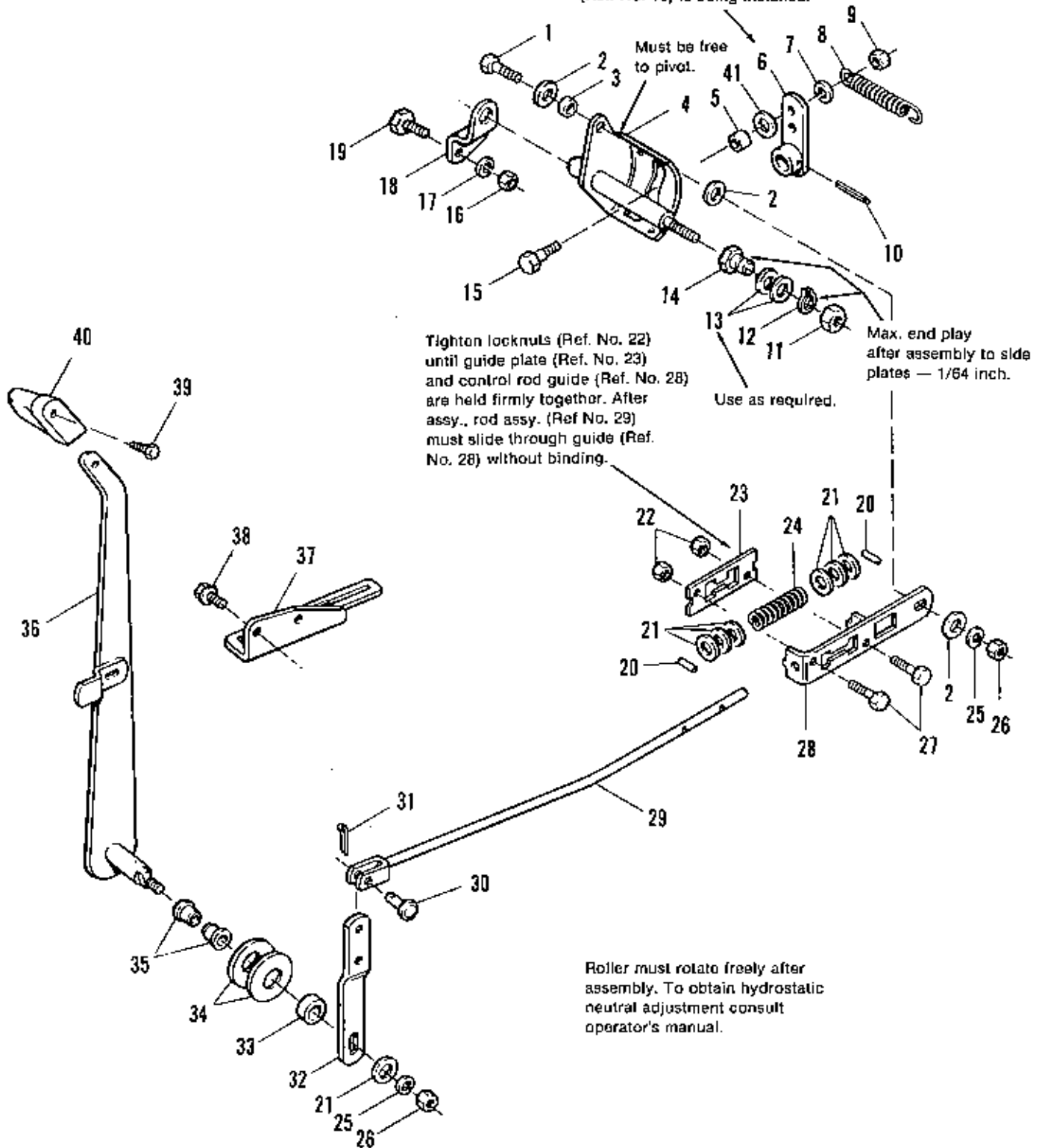
*Not Serviced Separately, See Ref. No. 34

**As required.

See page 19 for Ref. Nos. 1 thru 29



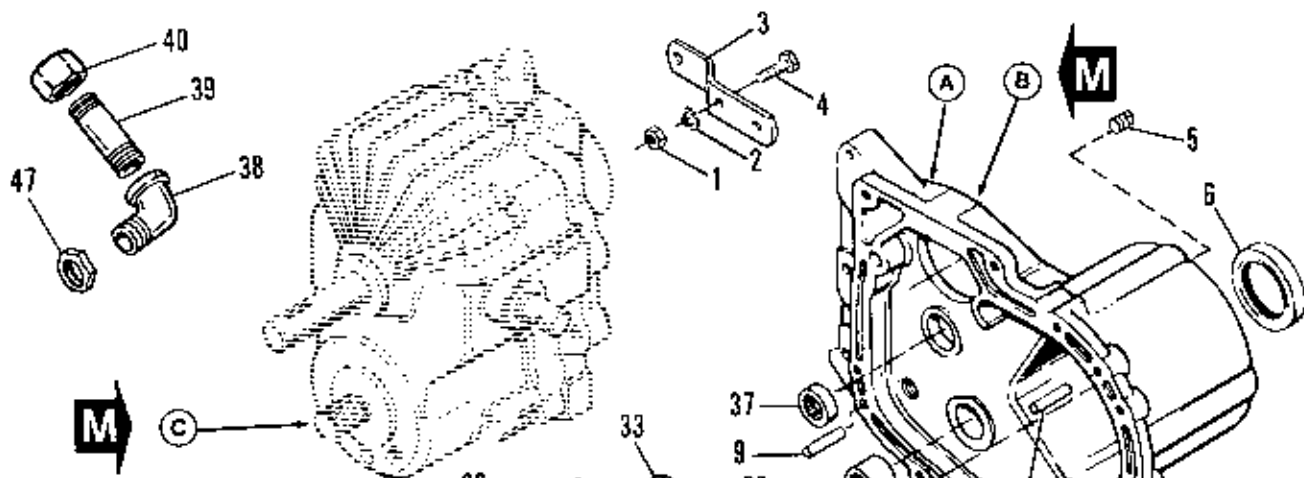
To prevent internal damage to hydrostatic unit, hub of control link assembly (Ref. No. 6) must be supported while roll pin (Ref. No. 10) is being installed.



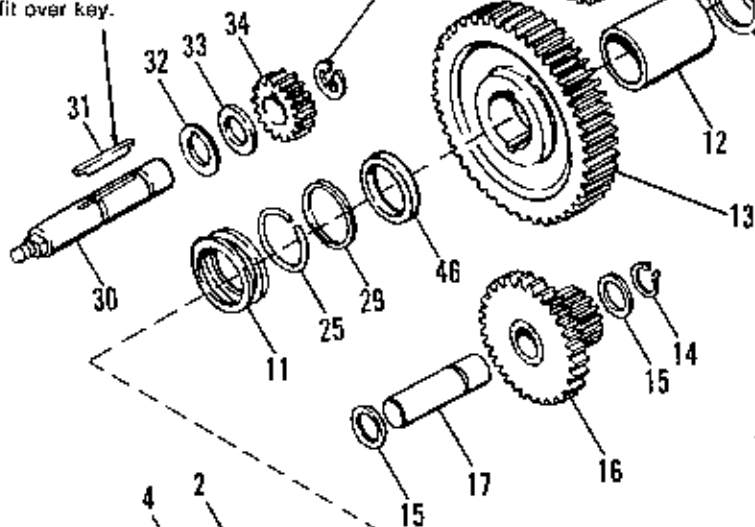
NOTE: Use standard hardware torque spec. chart unless otherwise noted.

Ref. No.	Part No.	Qty.	Description
1	921210	1	CAPSCREW, Hex Hd., 3/8-16 x 1
2	917642	3	WASHER, Plain, 5/16
3	1650506	1	SPACER
4	1650874	1	SHAFT ASSY.
5	1650592	1	ROLLER, Cam
6	1650392	1	LINK ASSY., Control
7	916964	1	LOCKWASHER, 1/4
8	174896	1	SPRING
9	916622	1	NUT, Hex, Full, 1/4-20
10	916937	1	PIN, Roll, 1/4 x 1-1/4
11	913744	1	LOCKNUT, Hex, Jam, 1/2-13
12	927794	1	RING, Retaining
13	1664204	2	SHIM (as required)
14	1650872	1	NUT, Adjusting
15	1650621	1	BOLT, Shoulder
16	917372	2	NUT, Hex, Full, 5/16-18
17	917356	2	LOCKWASHER, 5/16
18	1650401	1	BRACKET, Pivot
19	106772	2	SCREW, Special
20	919180	2	PIN, Roll, 1/8 x 5/8
21	917378	7	WASHER, Plain, 3/8
22	923358	2	LOCKNUT, Hex, 1/4-20
23	1650713	1	PLATE, Guide
24	1650347	1	SPRING
25	916965	2	LOCKWASHER, 3/8
26	916950	2	NUT, Hex, Full, 3/8-16
27	921961	2	CAPSCREW, Hex Hd., 1/4-20 x 1-1/4
28	1650712	1	GUIDE, Control Rod
29	1650715	1	ROD ASSY., Control
30	153058	1	PIN
31	918447	1	PIN, Cotter, 3/32 x 3/4
32	1650358	1	LINK
33	1665251	1	SPACER
34	168025	2	WASHER
35	108419	2	BUSHING
36	1665257	1	LEVER ASSY., Control
37	1650360	1	QUADRANT
38	931648	2	SCREW, Hex, Flange, Whiz, 5/16-18 x 1/2
39	933958	1	SCREW, Self Tapping, 1/4-20 x 1-1/4
40	171165	1	KNOB
41	921319	1	WASHER, Plain, 1/4

NOTE: Refer to Operator's Manual for Hydrostatic Neutral Adjustment.



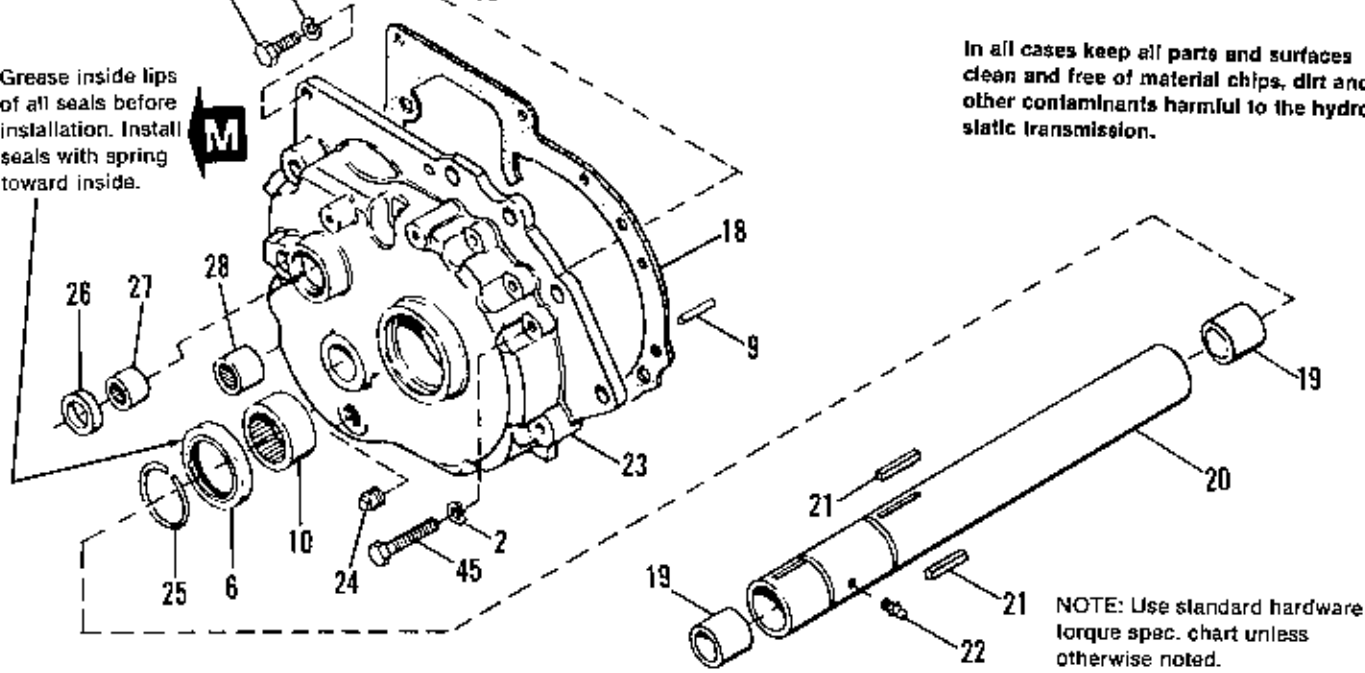
Notch in washer (Ref. No. 32) must fit over key.



Complete Transmission Seal Repair Kit . . . #1685198

Grease inside lips of all seals before installation. Install seals with spring toward inside.

In all cases keep all parts and surfaces clean and free of material chips, dirt and other contaminants harmful to the hydrostatic transmission.



NOTE: Use standard hardware torque spec. chart unless otherwise noted.

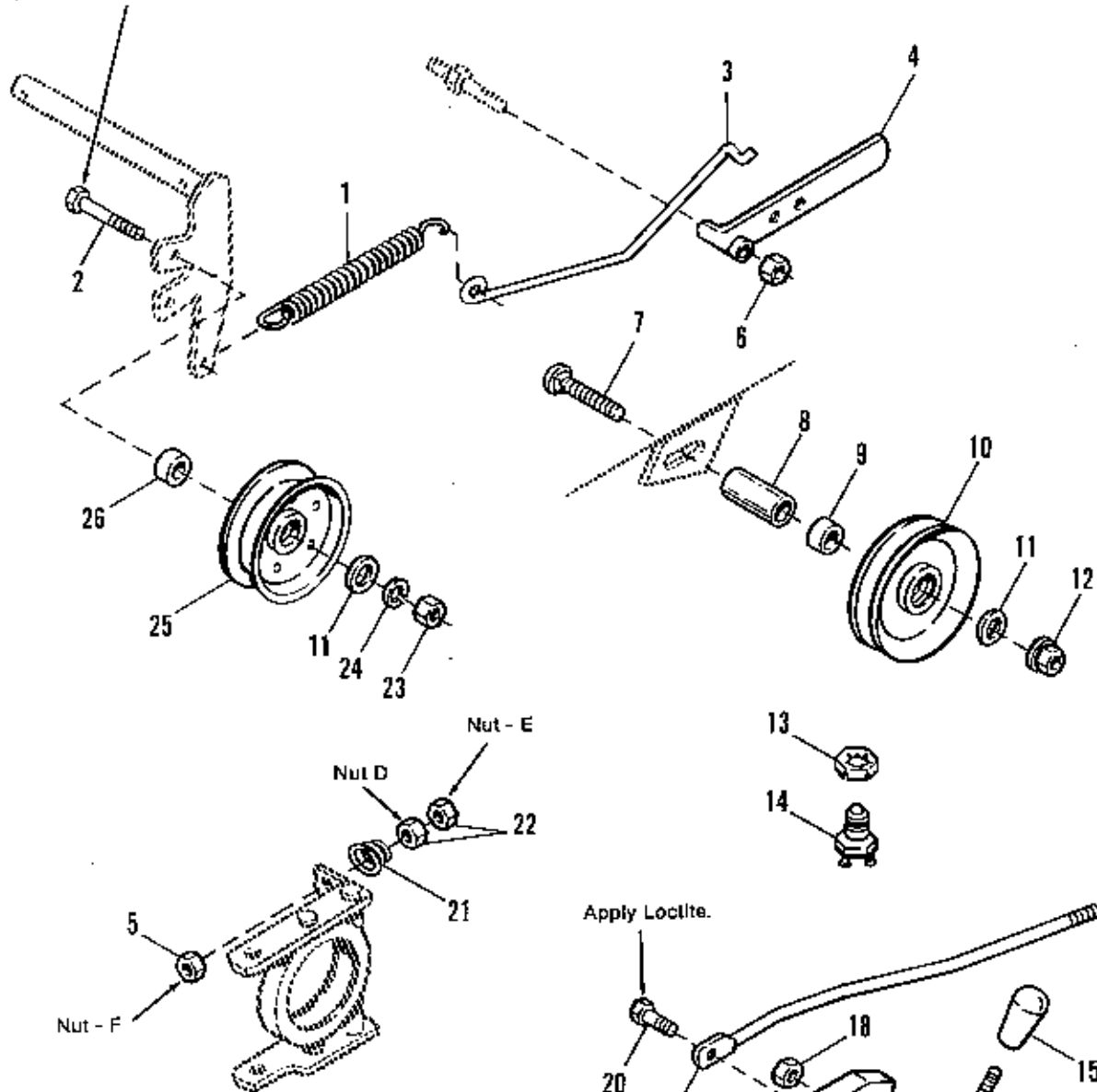
Ref. No.	Part No.	Qty.	Description
1	917372	2	NUT, Hex, Full, 5/16-18
2	917356	11	LOCKWASHER, 5/16
3	1667171	1	SUPPORT, Spring
4	921333	7	CAPSCREW, Hex Hd., 5/16-18 x 1
5	901652	1	PLUG, Pipe
6	154269	2	SEAL
7	1650429	1	CASE ASSY., w/Bearings
8		1	CASE, Gear (See Ref. No. 7)
9	927609	2	PIN, Roll, 3/8 x 1
10	1652469	2	BEARING
11	154097	4	WASHER
12	166041	1	SPACER, Axle, LH
13	1670857	1	GEAR, Drive
14	166017	1	RING, Retaining
15	166016	2	WASHER
16	176236	1	PINION & SHAFT ASSY.
17	166012	1	SHAFT, Intermediate
18	166043	1	GASKET
19	1653120	2	BUSHING
20	1673801	1	TUBE ASSY, Axle
21	154096	2	KEY
22	914687	1	FITTING, Grease
23	1650427	1	COVER ASSY., Grease Case w/Bearings
24	901653	1	PLUG, Pipe
25	154268	2	RING, Retaining
26	166021	1	SEAL
27	166019	1	BEARING
28	166018	2	BEARING, Needle
29	166167	1	WASHER
30	1650775	1	SHAFT, Brake
31	166014	1	KEY
32	1651078	1	WASHER
33	166013	2	WASHER
34	176243	1	PINION
35	176980	2	RING, Retaining
36	166004	1	GEAR
37	154271	1	BEARING, Needle
38	901723	1	ELBOW, Street
39	901493	1	NIPPLE, Pipe
40	1667346	1	CAP, Pipe
41	172899	1	VALVE, Relief
42	901825	1	BUSHING, Pipe
43	901677	1	ELBOW, Pipe
44	901480	1	NIPPLE, Pipe
45	921978	4	CAPSCREW, Hex Hd., 5/16-18 x 2
46	166040	1	SPACER, Axle, RH
47	932849	1	LOCKNUT, 3/8, Rigid Conduit

HYDROSTATIC TRANSMISSION

- A. Mask hydrostatic mounding surface and cover hole prior to painting.
- B. Use gasket eliminator and place 1/8 inch bead all around.
1. Make sure "O" ring on pilot bearing stays in place until assy. is complete.
 2. After a contact is made with gasket material, complete assy. in a manner that will prevent smearing of gasket material.

- C. Clean mating surface with LocQuic primer NF by spraying & wiping with a clean cloth to remove contamination. If part is assembled within 30 minutes no additional treatment is required. Otherwise spray thin film onto surface. Permit to visibly dry.

Mount in upper hole for mower drive. Use lower hole for snowthrower mounting (See Operator's Manual).



Center PTO Adjustment

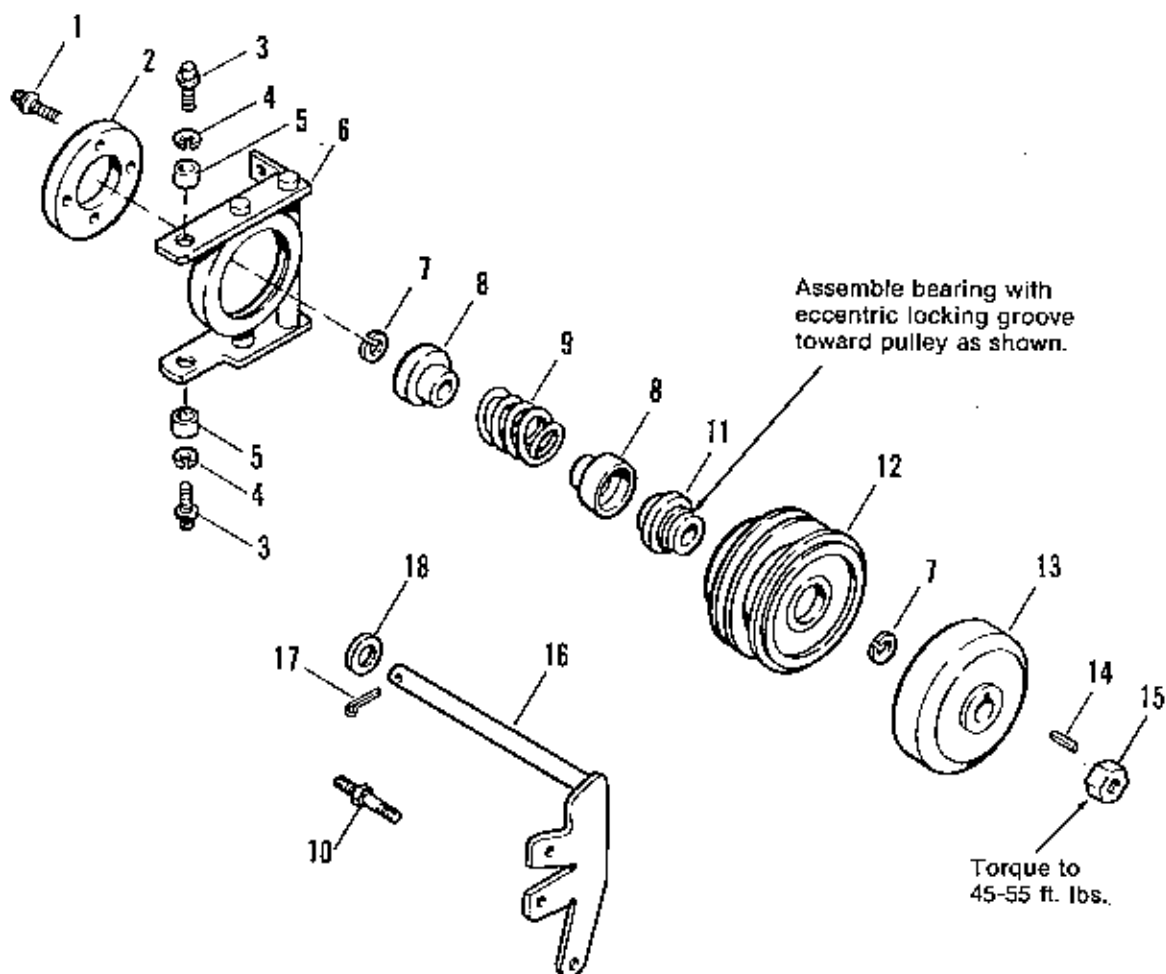
1. Adjust PTO adjustment nut "D" until pulley travel from engaged to disengaged position equals $1/16 \pm 1/32$ inch.
2. Secure adjustment by locking nuts "D" and "E" together.
3. Check clutch for proper disengagement.
4. Adjust locknut "F" for $1/8$ inch between pivot arm and face of locknut "F" when clutch is disengaged.

Ref. No. 19 must rotate freely on Ref. No. 20 after Ref. No. 20 is tightened.

Adjust interlock switch (Ref. No. 14) to make contact when lever (Ref. 17) is resting against top of frame.

NOTE: Use standard hardware torque spec. chart unless otherwise noted.

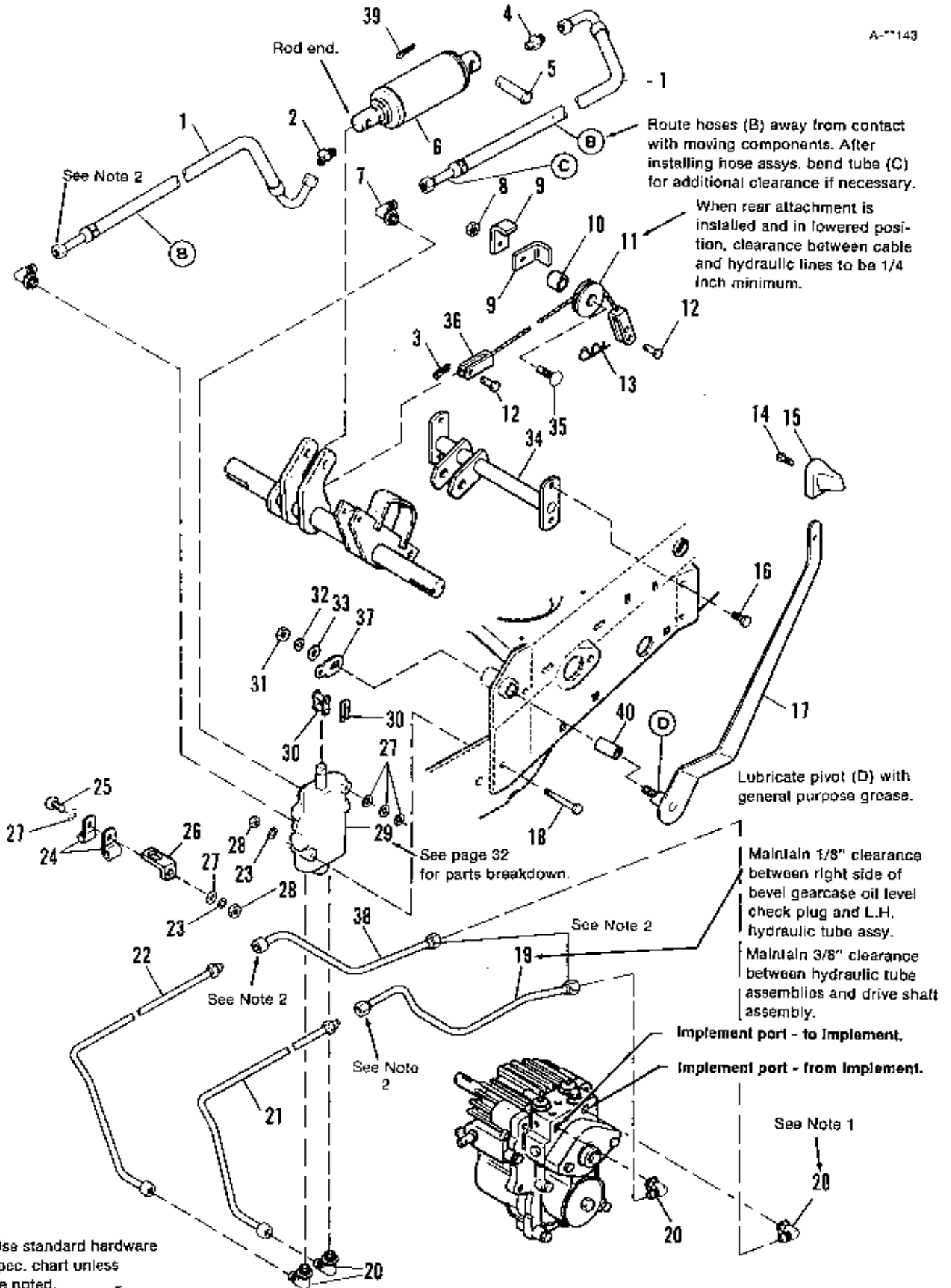
Ref. No.	Part No.	Qty.	Description
1	1666786	1	SPRING, Tension
2	923701	1	CAPSCREW, Hex Hd., 3/8-16 x 2
3	1671424	1	ROD, Tension
4	164155	1	HANDLE ASSY.
5	928698	1	LOCKNUT, Hex, Jam, Cntr. 5/16-18
6	924058	1	LOCKNUT, Hex, 7/16-14
7	931353	1	BOLT, Carriage, 3/8-16 x 1-3/4
8	1667811	1	SPACER
9	1666294	1	SPACER
10	1665440	1	PULLEY ASSY., w/Bearings
11	917378	2	WASHER, Plain, 3/8
12	928352	1	LOCKNUT, Whizlock, Flange, 3/8-16
13	930647	1	NUT, Pal
14	177522	1	SWITCH, Interlock
15	172038	1	KNOB
16	174684	1	HANDLE, PTO, Clutch
17	173991	1	LEVER
18	930651	1	LOCKNUT, Hex, 3/8-16
19	1671323	1	ROD ASSY., Control
20	174686	1	CAPSCREW, Special
21	157127	1	SPRING
22	917372	2	NUT, Hex, Full, 5/16-18
23	916950	1	NUT, Hex, Full, 3/8-16
24	916965	1	LOCKWASHER, 3/8
25	1606554	1	PULLEY, Idler
26	1667812	1	SPACER



NOTE: Use standard hardware torque spec. chart unless otherwise noted.

Ref. No.	Part No.	Qty.	Description
1	920036	4	CAPSCREW, Socket Hd., 1/4-20 x 5/8
2	173957	1	DISC, Brake
3	1651450	2	SCREW, Thd. Forming
4	917356	2	LOCKWASHER, 5/16
5	171371	2	SPACER
6	1650906	1	PIVOT ASSY.
7	172208	2	RING, Retaining
8	1671339	2	GUIDE, Spring
9	171772	1	SPRING
10	157273	1	STUD
11	1650254	1	BEARING ASSY.
12	1650304	1	PULLEY
13	174862	1	PLATE ASSY., Clutch
14	905123	1	KEY
15	922133	1	LOCKNUT, Hex, 3/4-16
16	1666781	1	ARM ASSY., Pivot
17	918459	1	PIN, Cotter, 3/16 x 1-1/2
18	912018	1	WASHER

A-1143



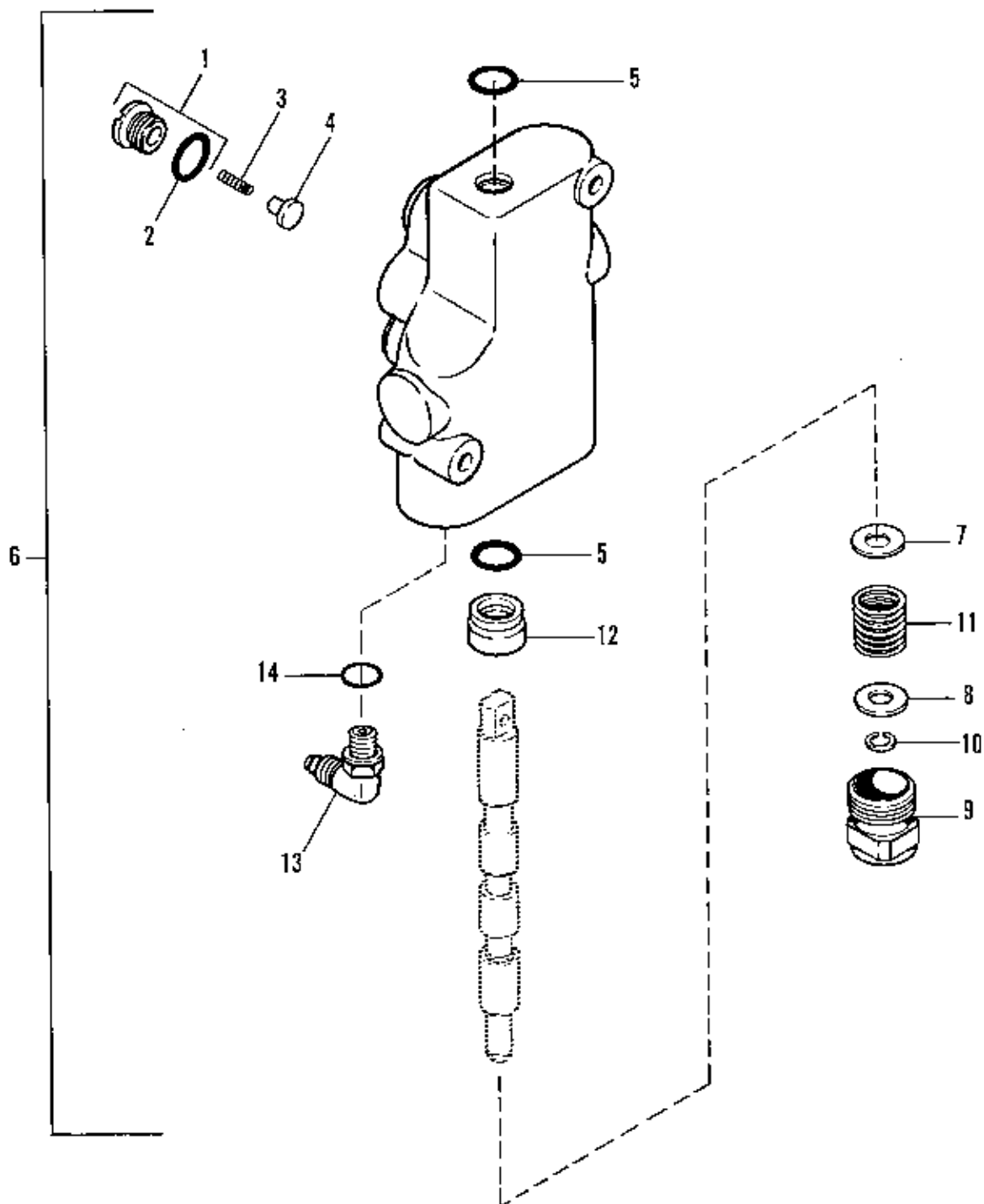
NOTE: Use standard hardware torque spec. chart unless otherwise noted.

Ref. No.	Part No.	Qty.	Description
1	1667408	2	HOSE, Hydraulic
2	935046	1	ELBOW, 45° Male
3	918448	1	PIN, Cotter, 3/32 x 1
4	919766	1	CONNECTOR, 37° Male
5	171690	2	PIN
6	1667409	1	CYLINDER, Hydraulic
7	928812	2	ELBOW, Adjustable, 37°
8	928731	1	LOCKNUT, Hex, Jam, 3/8-16
9	174723	2	GUARD, Cable
10	157081	1	SPACER
11	172725	1	PULLEY
12	153058	2	PIN
13	918198	1	CLIP, Spring
14	933958	1	SCREW, Hex, Was. Hd., Taptite, 1/4-20 x 1-1/4
15	171165	1	KNOB
16	923683	4	SCREW, Hex, Wash. Hd., Taptite, 3/8-16 x 3/4
17	1667270	1	LEVER ASSY.
18	921159	2	CAPSCREW, Hex Hd., 1/4-20 x 2-1/4
19	1667437	1	TUBE ASSY.
20	922523	4	ELBOW, Adjustable, 37°
21	1668883	1	TUBE ASSY.
22	1668882	1	TUBE ASSY.
23	916964	3	LOCKWASHER, 1/4
24	926917	2	CLAMP
25	921961	1	CAPSCREW, Hex Hd., 1/4-20 x 1-1/4
26	108186	1	CLIP
27	921319	5	WASHER, Plain, 1/4
28	916622	3	NUT, Hex, Full, 1/4-20
29	1673825	1	CONTROL VALVE ASSY. (See page 32)
30	171101	1	LINK, Connecting
31	916950	1	NUT, Hex, Full, 3/8-16
32	916965	1	LOCKWASHER, 3/8
33	917378	1	WASHER, Plain, 3/8
34	1667269	1	SUPPORT ASSY.
35	108418	1	SCREW, Special
36	1673700	1	CABLE ASSY.
37	1667261	1	BELLCRANK
38	1667435	1	TUBE ASSY.
39	918452	2	PIN, Cotter
40	158544	1	BEARING

ASSEMBLY NOTES

Important: Take special care that no dirt or foreign material is allowed to enter hydraulic circuit during assembly of fittings.

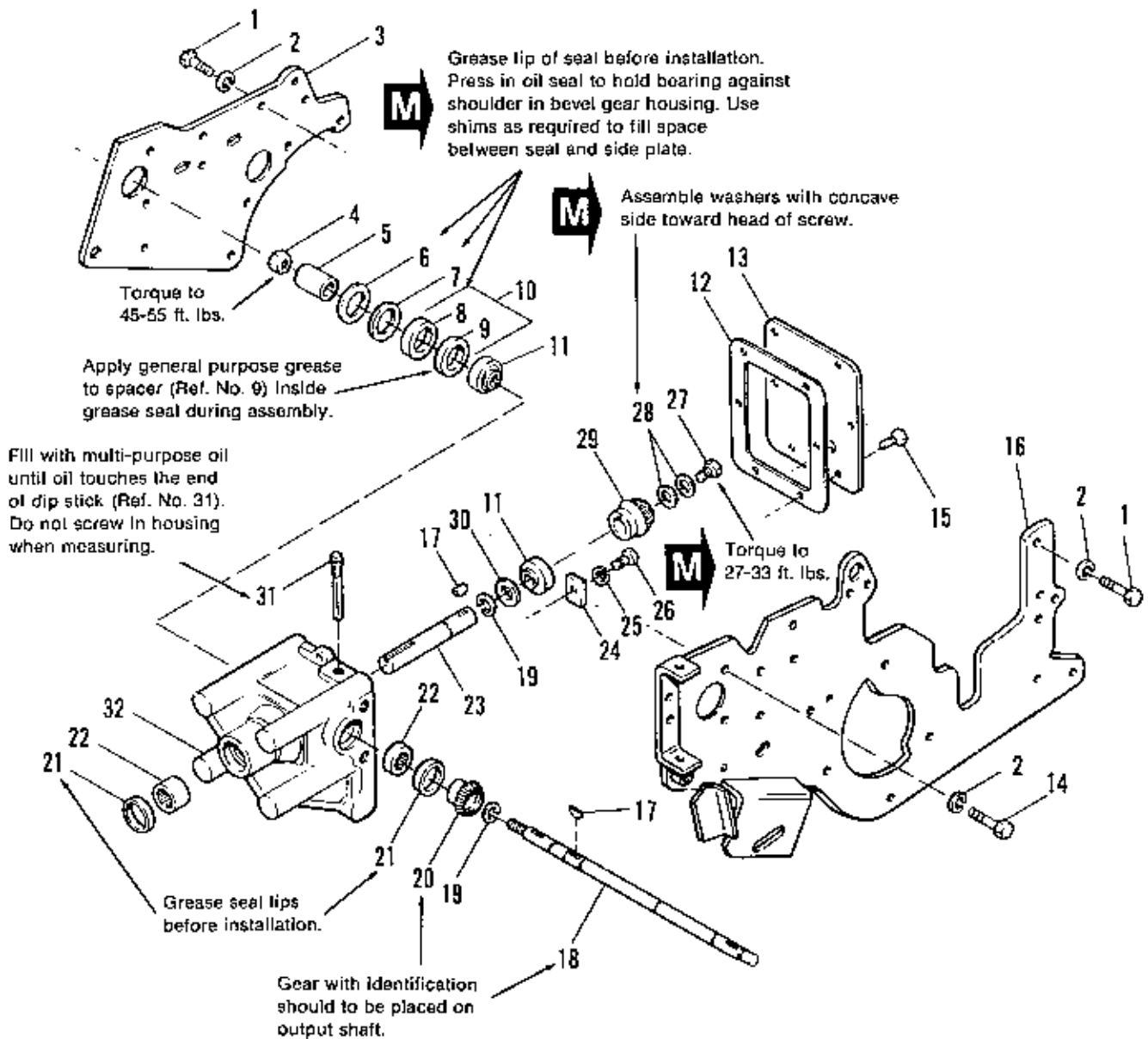
1. To install swivel fittings (Ref. No. 20), first lubricate O-ring with light oil. Then turn swivel nut until O-ring is seated. Turn fitting by hand to align with tube nut.
2. To install tubes, first align threaded fitting with tube nut. Then thread nut onto fitting and tighten. Hold fitting and turn nut with wrench to seal joint.



Seal Repair
Kit for Cessna
Valve — 1667826

Ref. No.	Part No.	Qty.	Description
1	174131	1	PLUG ASSY.
2	*174133	1	O-RING
3	174134	1	SPRING
4	174130	1	PLUNGER
5	*174140	2	O-RING
6	1673825	1	VALVE ASSY.
7	1673836	1	WASHER
8	1673833	1	SPACER
9	1673834	1	CAP
10	1673837	1	RING, Retaining
11	1673835	1	SPRING
12	174137	1	BUSHING
13	922523	2	ELBOW
14	*1667825	2	O-RING

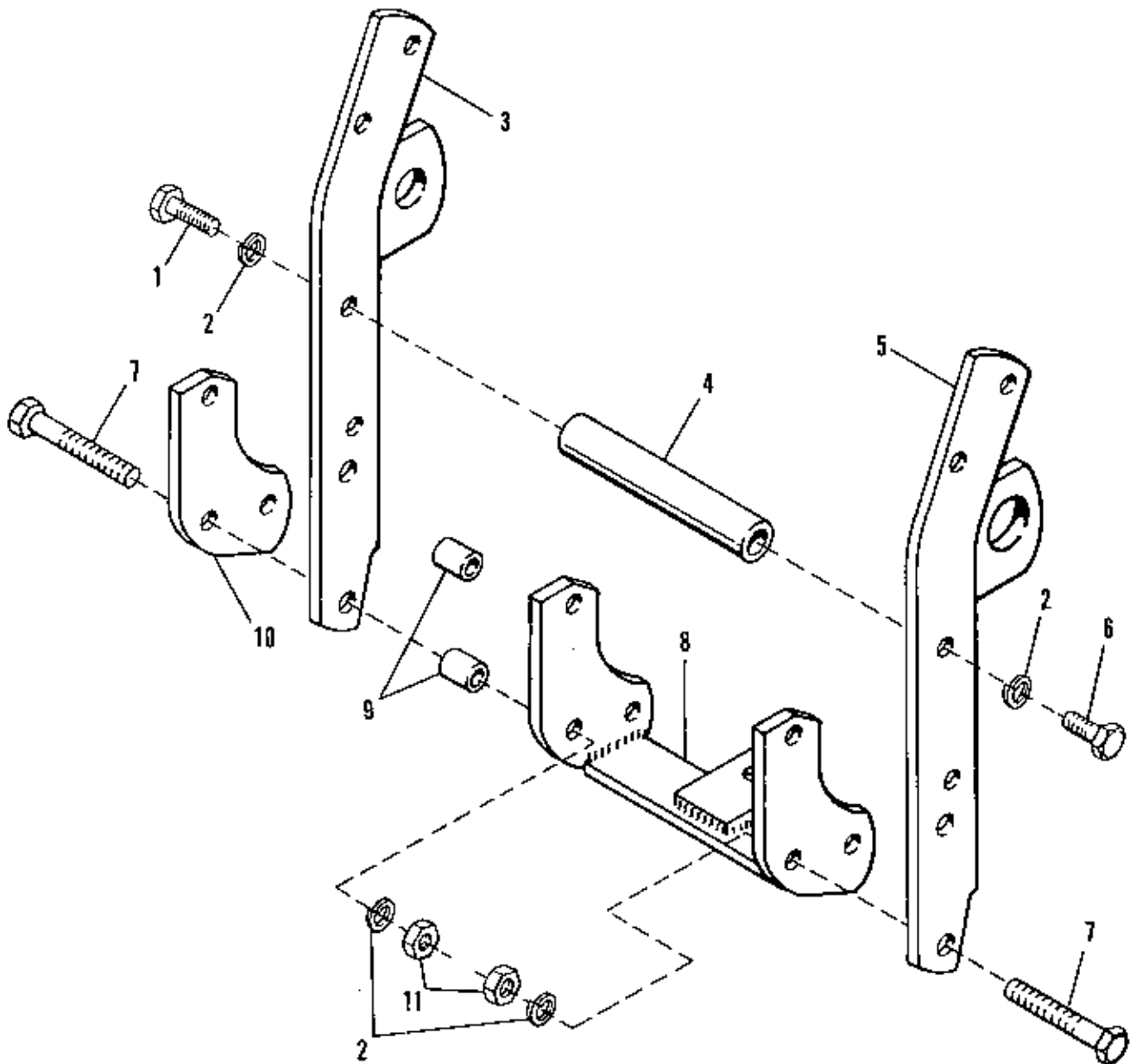
*Seal Repair Kit 1667826 contains Ref. No. 2 (Qty. 1), Ref. No. 5 (Qty. 2) and Ref. No. 14 (Qty 2).



NOTE: Use standard hardware torque spec. chart unless otherwise noted.

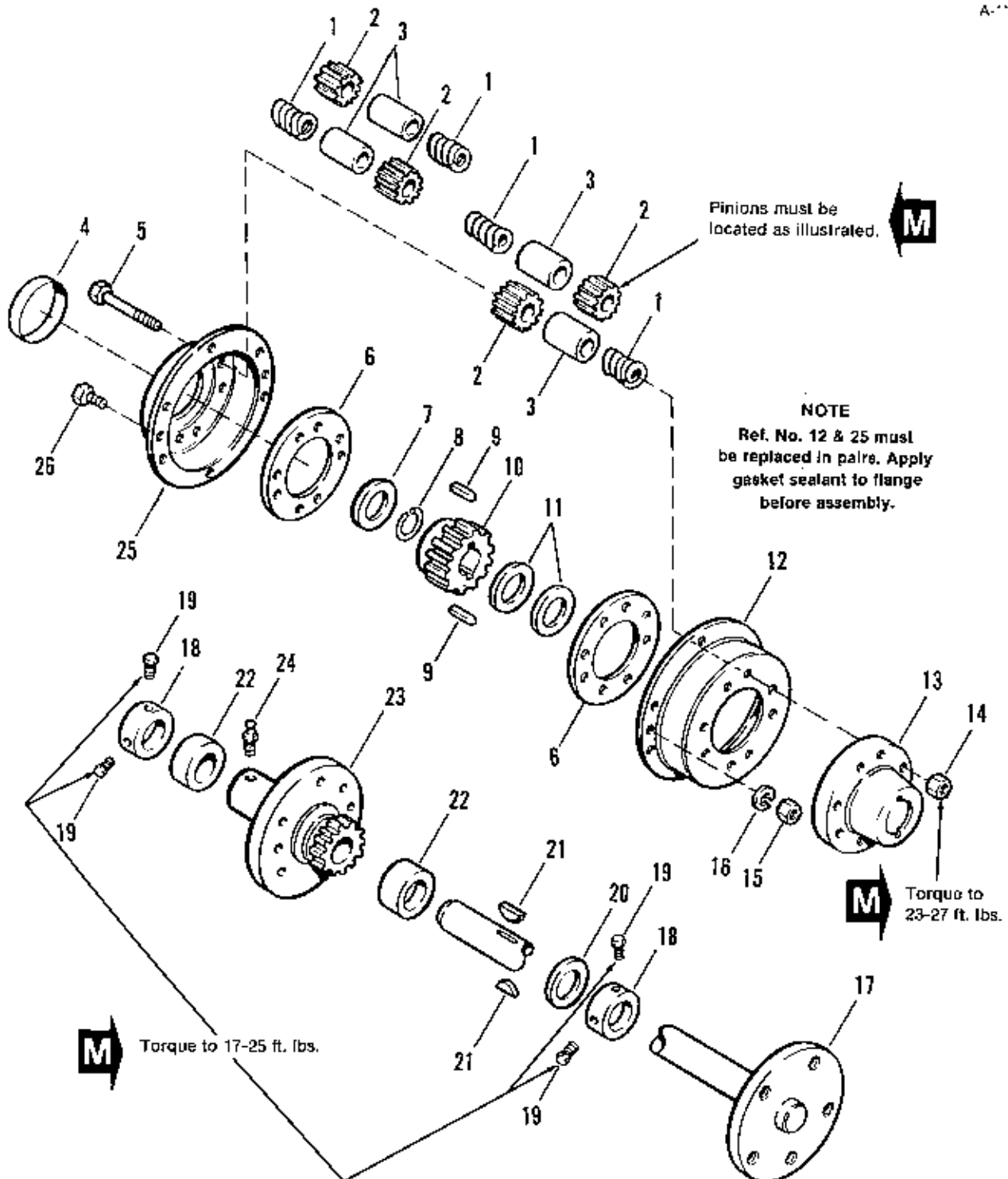
Ref. No.	Part No.	Qty.	Description
1	920677	6	CAPSCREW, Hex Hd., 7/16-14 x 1-1/4
2	918199	12	LOCKWASHER, 7/16
3	1650414	1	PLATE, Side, RH
4	922133	1	LOCKNUT, Hex, Jam, 3/4-16
5	171792	1	SPACER
6	171790	5	SHIM
7	171791	1	SHIM
8	171787	1	SEAL, Oil
9	1663111	1	SPACER, Seal, Oil
*10	1685088	1	REPAIR KIT, Seal
11	172256	2	BEARING, Ball
12	154282	1	GASKET
13	178104	1	COVER
14	920676	6	CAPSCREW, Hex Hd., 7/16-14 x 1
15	930562	6	CAPSCREW, Hex Hd., 1/4-20 x 5/8
16	1671687	1	PLATE ASSY., Side, LH
17	905123	2	KEY, Woodruff, #9
18	1657178	1	SHAFT, Driven
19	172206	2	RING, Retaining
20	171796	1	GEAR, Bevel, Driven
21	118117	2	SEAL, Oil
22	154279	2	BEARING, Needle
23	172750	1	SHAFT, Driver
24	154040	1	PLATE, Bearing, Clamp
25	917356	1	LOCKWASHER, 5/16
26	925205	1	CAPSCREW, Hex Hd., 5/16-18 x 5/8
27	154281	1	CAPSCREW, Hex Hd., 5/16-18 x 3/4
28	177649	2	WASHER
29	172752	1	GEAR, Bevel, Driver
30	172753	1	WASHER
31	178105	1	PLUG ASSY.
32	171797	1	HOUSING, Bevel Gear

* Ref. No. 10 includes Ref. Nos. 8 & 9.



NOTE: Use standard hardware torque spec. chart unless otherwise noted.

Ref. No.	Part No.	Qty.	Description
1	923027	1	CAPSCREW, Hex Hd., 7/16-14 x 1-3/4
2	918199	6	LOCKWASHER, 7/16
3	166072	1	BAR ASSY., Upright
4	166110	1	SPACER
5	166206	1	BAR ASSY., Upright
6	920677	3	CAPSCREW, Hex Hd., 7/16-14 x 1-1/4
7	926110	2	CAPSCREW, Hex Hd., 7/16-14 x 2-3/4
8	166074	1	BAR ASSY., Draw
9	1608759	2	SPACER
10	166075	1	PLATE
11	918213	4	NUT, Hex, Full, 7/16-14



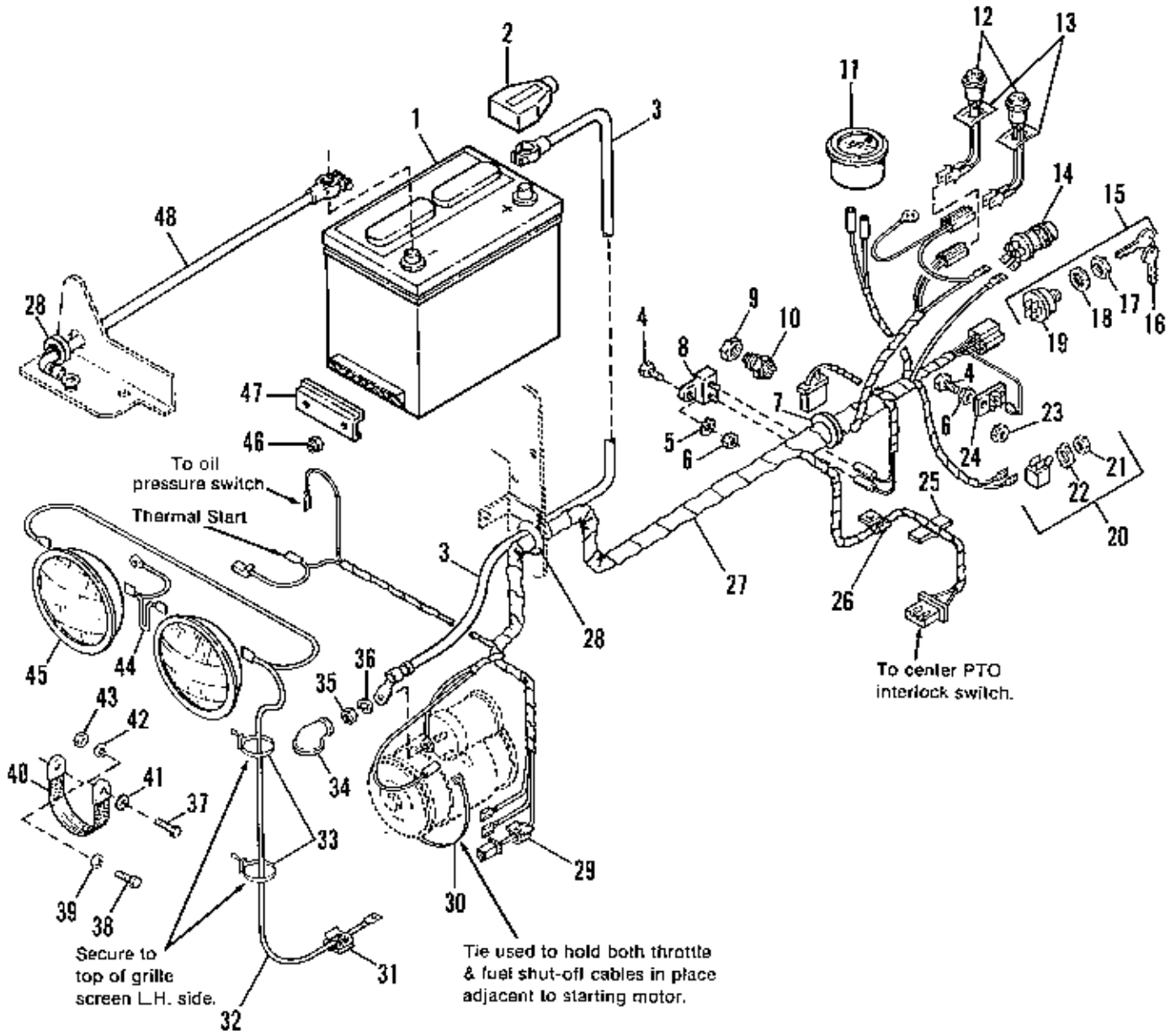
NOTE: Use standard hardware torque spec. chart unless otherwise noted.

Ref. No.	Part No.	Qty.	Description
1	*162085	8	SPRING
2	*158579	8	PINION, Differential
3	*121083	8	SPINDLE, Differential
4	*121190	1	SEAL, Cover
5	*921972	8	CAPSCREW, Hex Hd., 3/8-16 x 2-1/2
6	*171517	2	RING, Spacer
7	154277	1	WASHER
8	154291	1	RING, Retainng
9	930671	2	KEY, Hi-Pro
10	177041	1	GEAR, Differential
11	171515	2	WASHER
12	*171853	1	COVER, Differential
13	*164217	1	CARRIER, Differential
14	*930851	8	LOCKNUT, Hex, 3/8-16
15	*916622	6	NUT, Hex, Full, 1/4-20
16	*916964	6	LOCKWASHER, 1/4
17	1673798	1	AXLE ASSY., Rear
18	154065	2	COLLAR, Set
19	928721	4	SETSCREW, 5/16-18 x 1/2
20	105050	1	WASHER
21	157120	2	KEY, Drive
22	153068	2	BEARING
23	176945	1	HUB ASSY., Wheel, RH
24	915019	1	FITTING, Grease
25	*171854	1	COVER, Differential
26	*921959	6	CAPSCREW, Hex Hd., 1/4-20 x 5/8
	1650519	1	DIFFERENTIAL SUBASSY. (See Note Below)

***NOTE: Differential Subassembly (1650519)**

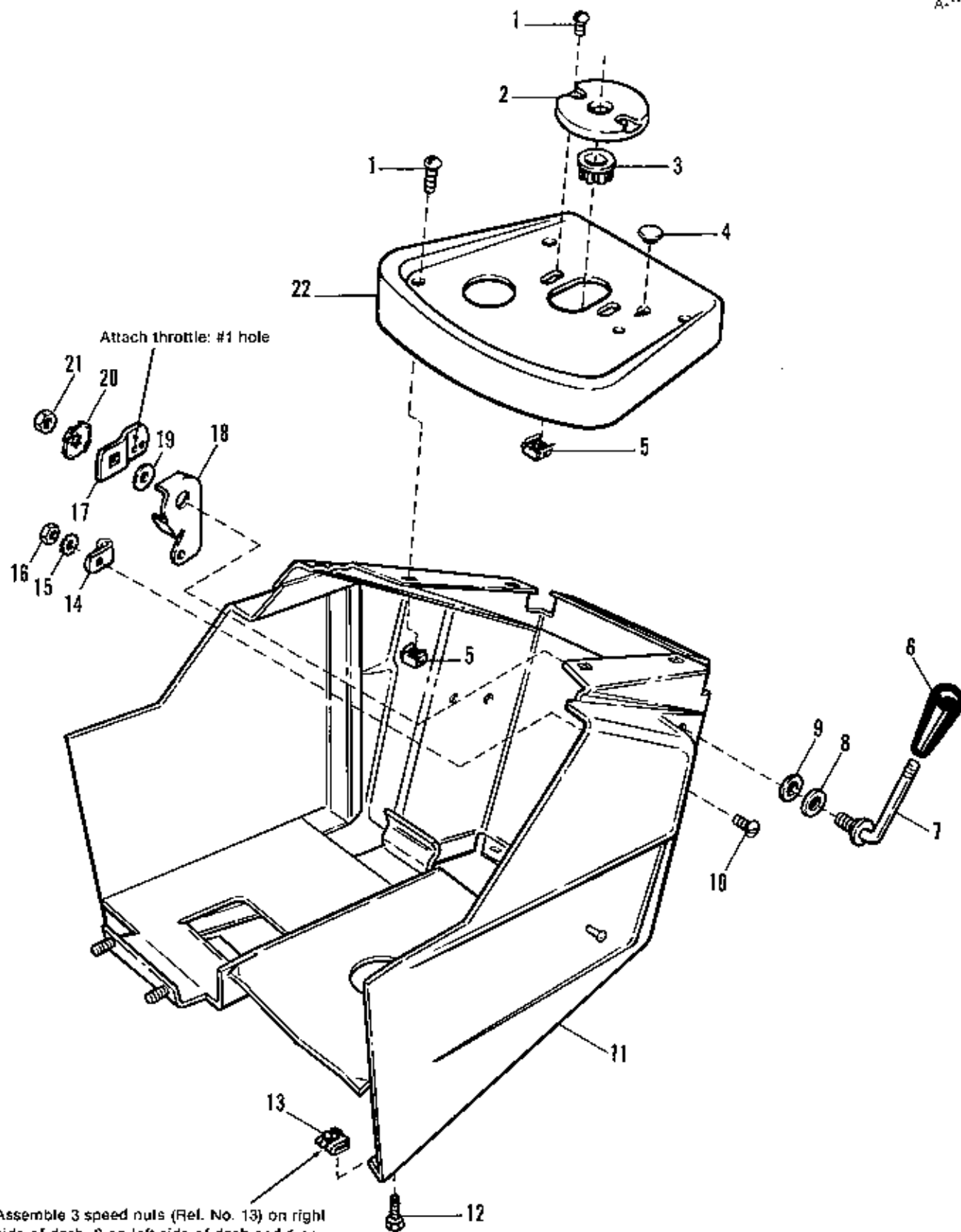
Includes Ref. Nos. 1, 2, 3, 4, 5, 6, 12, 13

14, 15, 16, 25 & 26.



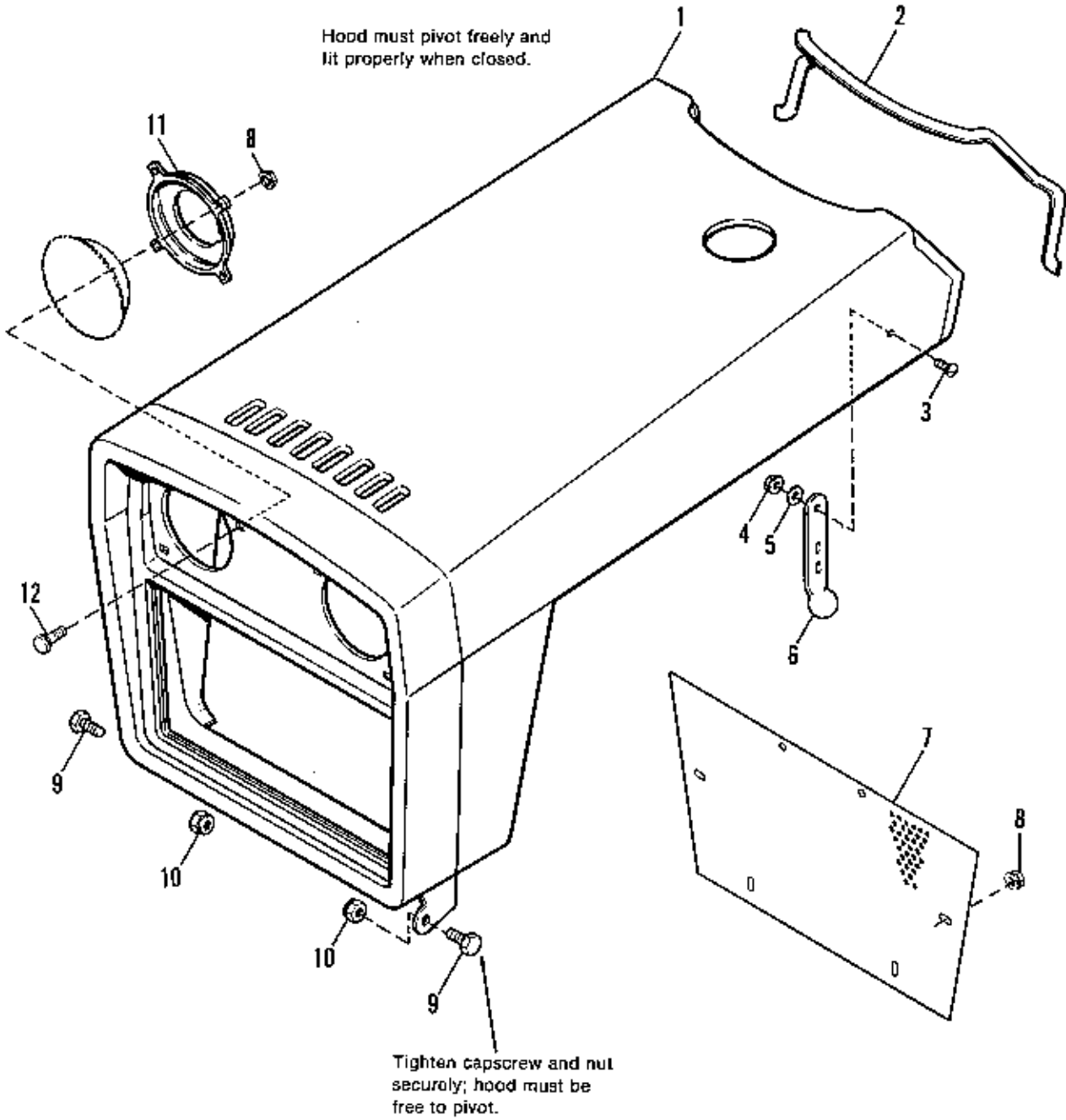
Ref. No.	Part No.	Qty.	Description
1	1685250	1	BATTERY (Includes decal)
2	1673698	1	CABLE BOOT, Insulating
3	1673544	1	CABLE (Battery to Solenoid)
4	921880	3	CAPSCREW, Hex Hd., 1/4-20 x 5/8
5	921880	2	LOCKWASHER, Ext., 1/4
6	916622	3	NUT, Hex, Full, 1/4-20
7	172175	1	GROMMET
8	1665238	1	BREAKER, Circuit
9	930647	1	NUT, Pal
10	177522	1	SWITCH, Interlock
11	1603189	1	AMMETER
12	1673595	2	LIGHT, Indicator
13	1673013	2	NUT, Speed, Push on
14	1674195	1	SWITCH, Push Button
15	*1607280	1	SWITCH & KEY ASSY., Ignition
16	122203	1	KEY SET (2)
17	122235	1	NUT, Special
18	918906	1	LOCKWASHER, Int., 5/8
19		1	SWITCH, Ignition (See Ref. No. 15)
20	122184	1	SWITCH, Toggle
21	1650860	1	NUT, Switch
22	1650878	1	PLATE
23	923358	2	LOCKNUT, Hex 1/4-20
24	1665230	1	BOARD, Terminal
25	176912	1	CLIP, Wire
26	932771	1	CLIP, Cable
27	1673539	1	HARNES ASSY.
28	1673793	2	GROMMET
29	172434	1	CLIP, Tinnerman
30	925442	1	TIE
31	176675	1	CLIP, Speed Cable
32	1666665	1	WIRE ASSY.
33	932747	2	TIE
34	1673699	1	COVER, Terminal
35	950220	1	NUT, Hex, M8
36	950219	1	LOCKWASHER, M8
37	921966	1	CAPSCREW, Hex Hd., 3/8-16 x 7/8
38	950036	1	CAPSCREW, M10 x 1.5 x 25
39	950220	1	LOCKWASHER, M10
40	1673603	1	STRAP, Ground (Engine to Ground)
41	920427	1	LOCKWASHER, Ext. Tooth 3/8
42	916965	1	LOCKWASHER, 3/8
43	916950	1	NUT, Hex 3/8-16
44	925442	1	TIE
45	1665853	2	LAMP, Sealed Beam, G.E. #4411-1
46	924433	2	NUT, Elastic 5/16-18
47	171225	1	CLAMP
48	1673542	1	CABLE (Battery to Ground)

*Part #1607280 Includes Ref. No. 16, 17, 18 & 19



NOTE: Use standard hardware torque spec. chart unless otherwise noted.

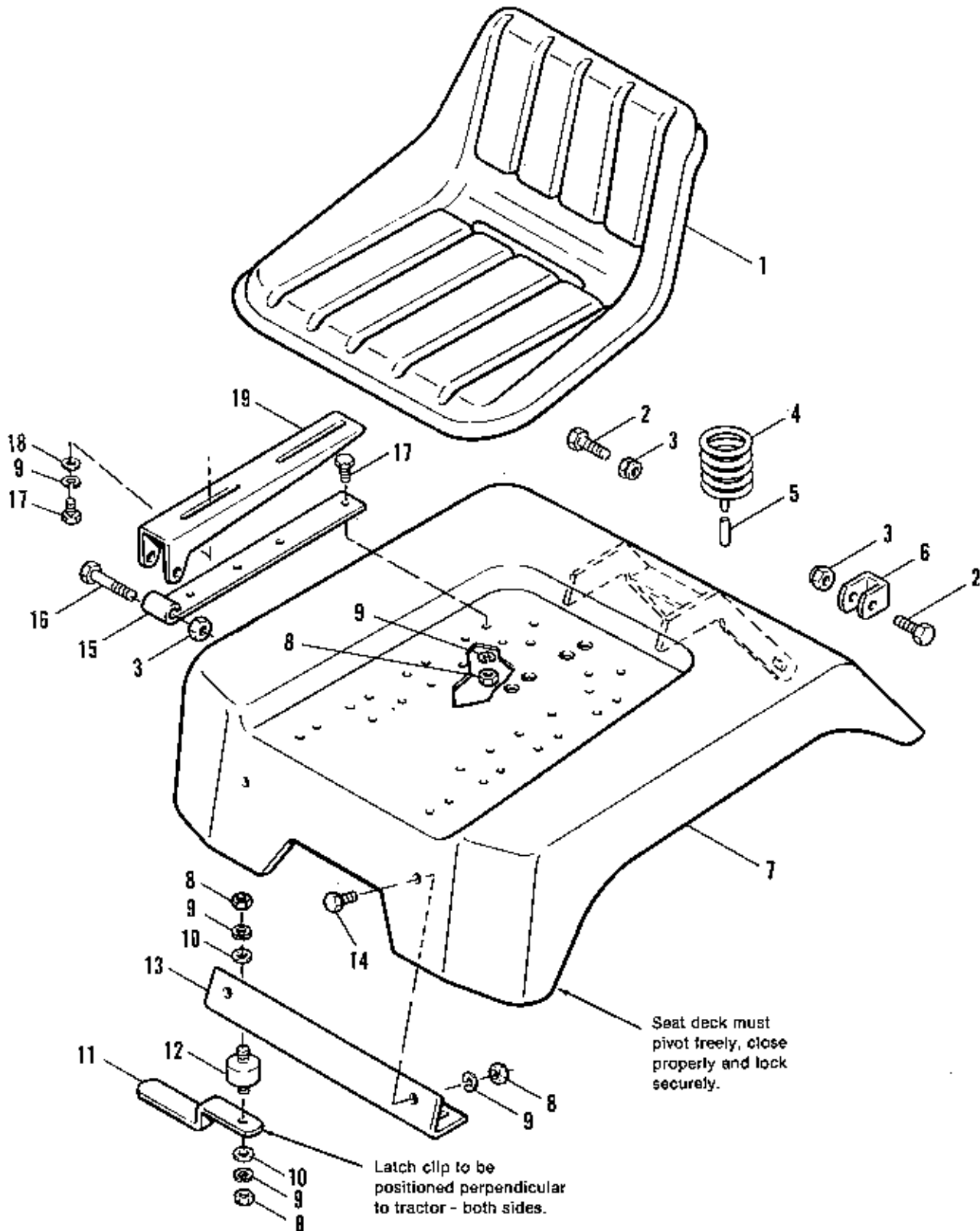
Ref. No.	Part No.	Qty.	Description
1	926025	6	SCREW, Machine, Rd. Hd., 1/4-20 x 12
2	172008	1	PLATE, Adjusting, Steering
3	157077	1	BUSHING
4	177447	1	PLUG, Button
5	917867	6	NUT, Tinnerman
6	172038	1	KNOB
7	1651170	1	HANDLE, Clutch Control
8	101025	1	WASHER
9	156116	1	WASHER
10	930531	1	SCREW, Round Hd., #10-32 x 1/2
11	1673505	1	DASH ASSY.
12	930561	8	SCREW, Hex, Self Tapping, #14AB x 3/4
13	928703	6	NUT, Speed
14	158475	1	CLIP, Bowden Wire
15	922711	1	LOCKWASHER, Ext. #10
16	917415	1	NUT, Machine, Hex, #10-32
17	1666703	1	ARM, Throttle
18	171848	1	STOP, Throttle
19	159107	1	WASHER
20	930685	1	LOCKWASHER, Dished Type, 3/8
21	930851	1	LOCKNUT, Hex, 3/8-16
22	1673515	1	PANEL, Instrument



NOTE: Use standard hardware torque spec. chart unless otherwise noted.

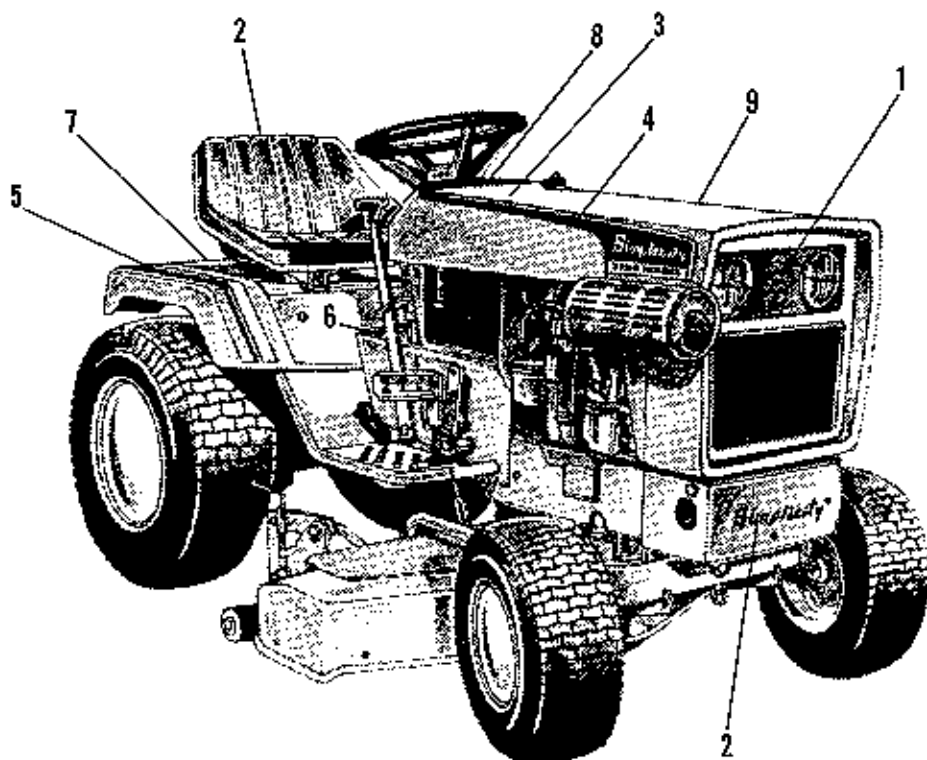
Ref. No.	Part No.	Qty.	Description
1	1673511	1	HOOD & GRILLE ASSY.
2	1666163	1	MOULDING, Hood
3	930531	2	SCREW, Truss Hd., #10-32 x 1/2
4	930627	2	LOCKNUT, Hex, #10-32
5	171804	2	WASHER, Special
6	171600	2	STRAP, Hood
7	1673514	1	SCREEN
8	1665253	14	LOCKNUT, Pal
9	921210	2	CAPSCREW, Hex Hd., 3/8-16 x 1
10	930651	2	LOCKNUT, Hex, 3/8-16
11	1665813	2	BRACKET, Headlight
12	936363	4	BOLT, Carriage, #10-29 x 12

NOTE: Hood & Grille Assys. differ in the headlight mounting area.



NOTE: Use standard hardware torque spec. chart unless otherwise noted.

Ref. No.	Part No.	Qty.	Description
1	1671247	1	SEAT ASSY.
2	920415	2	CAPSCREW, Hex Hd., 3/8-16 x 1-1/4
3	930651	4	LOCKNUT, Hex, 3/8-16
4	1666690	2	SPRING, Seat
5	1666691	2	COVER, Wire
6	1607870	1	STOP, Seat Deck
7	1666501	1	DECK ASSY., Seat
8	917372	12	NUT, Hex, Full, 5/16-18
9	917356	16	LOCKWASHER, 5/16
10	917377	4	WASHER, Plain, 1/4
11	1606823	2	CLIP
12	1666744	2	CONNECTOR, Cushion
13	164029	1	BRACKET, Seat Deck, Front
14	925205	2	CAPSCREW, Hex Hd., 5/16-18 x 5/8
15	1666737	2	HINGE, Lower
16	923701	2	CAPSCREW, Hex Hd., 3/8-16 x 2
17	921332	10	CAPSCREW, Hex Hd., 5/16-18 x 3/4
18	917642	4	WASHER, Plain, 5/16
19	1666200	2	HINGE, Upper



Ref. No.	Part No.	Qty.	Description
1	1673774	1	DECAL, Simplicity Grille
2	153166	2	DECAL, Simplicity
3	1666680	1	DECAL, Drive Belts
4	1673776	1	DECAL, Hood Stripe, RH
5	1657283	2	DECAL, Seat Deck
6	1673772	1	DECAL, Console, Hydro Diesel
7	1669366	1	DECAL, Cast Iron Trans.
8	1673771	1	DECAL, Dash, Hydro Diesel
9	1673777	1	DECAL, Hood Stripe, LH



Rear Tire



Front Tire




Rear Tires

Part No.	Qty.	Description
173432	2	WHEEL & TIRE ASSY., Rear, 23 x 10-1/2-12, Turf
1605967	2	TIRE, Tubeless, Carlisle, 23 x 10-1/2-12
1666894	2	TIRE, Tubeless, Goodyear, 23 x 10-1/2-12
1664215	2	TIRE, Tubeless, Firestone, 23 x 10-1/2-12
157638	2	TUBE
172353	2	VALVE STEM & CAP
173430	2	WHEEL, Drive
8261100	10	BOLT, Hub

Front Tires

Part No.	Qty.	DESCRIPTION
171376	2	WHEEL & TIRE ASSY., Front 16x 6-1/2-8, Turf
156305	2	VALVE STEM & CAP
157490	2	TIRE, Front, Goodyear, 16 x 6-1/2-8
164247	2	TUBE
171377	2	WHEEL SUBASSY. (Includes Bearing)
154393	4	CUP, Bearing
	2	WHEEL (See Part No. 171377 for Service)

**TORQUE SPECIFICATIONS FOR
STANDARD MACHINE HARDWARE
TOLERANCE $\pm 20\%$**




SIZE	SAE GRADE #2		SAE GRADE #5		SAE GRADE #8	
						
8-32	19	In. Lbs.	30	In. Lbs.	41	In. Lbs.
8-36	20	"	31	"	43	"
10-24	27	"	43	"	60	"
10-32	31	"	49	"	68	"
1/4-20	66	"	8	Ft. Lbs	12	Ft. Lbs.
1/4-28	76	"	10	"	14	"
5/16-18	11	Ft. Lbs	17	"	25	"
5/16-24	12	"	19	"	25	"
3/8-16	20	"	30	"	45	"
3/8-24	23	"	35	"	50	"
7/16-14	30	"	50	"	70	"
7/16-20	35	"	55	"	80	"
1/2-13	50	"	75	"	110	"
1/2-20	55	"	90	"	120	"
9/16-12	65	"	110	"	150	"
9/16-18	75	"	120	"	170	"
5/8-11	90	"	150	"	220	"
5/8-18	100	"	180	"	240	"
3/4-10	160	"	260	"	386	"
3/4-16	180	"	300	"	420	"
7/8-9	140	"	400	"	600	"
7/8-14	155	"	440	"	660	"
1-8	220	"	580	"	900	"
1-12	240	"	640	"	1,000	"

NOTE:

1. These torque values are to be used for all *Simplicity* hardware excluding: locknuts, self-tapping screws, thread forming screws, sheet metal screws and socket head setscrews.
2. Recommended seating torque values for locknuts:
 - a. For prevailing torque locknuts - use 65% of grade 5 torques.
 - b. For flange whizlock nuts (and screws) - use 135% of grade 5 torques.
3. Unless otherwise noted on assembly drawings all torque values must meet this specification.

BOLT HEAD MARKING

S.A.E. GRADE:

- 2 
- 5 
- 8 

Simplicity Manufacturing, Inc.
500 N. Spring Street
P.O. Box 997
Port Washington, WI 53074-0997